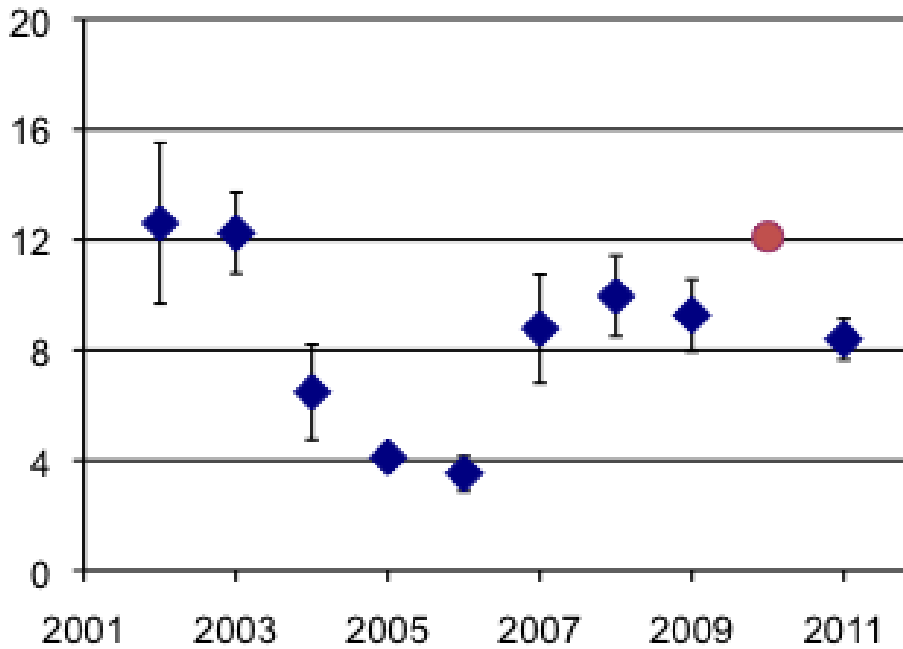


Organic Analyses in Sediments

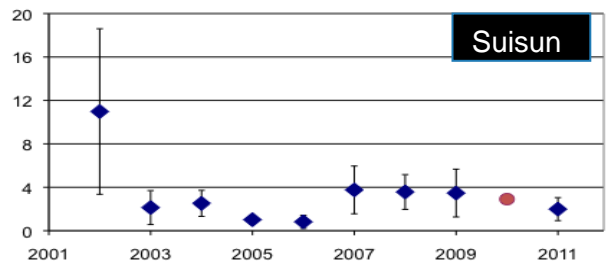
SC Meeting, January 28th, 2014

PCBs : 2004-2006 Mystery Dip

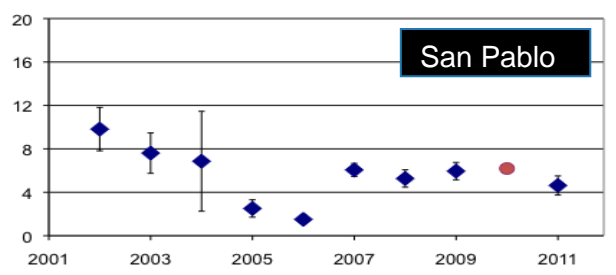
Whole Bay



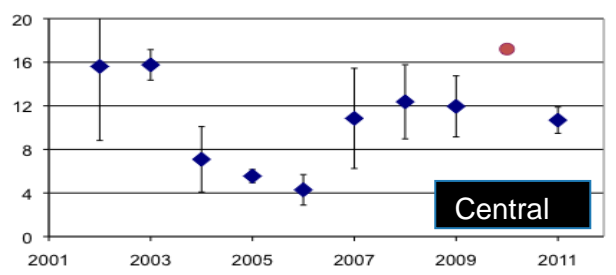
Suisun



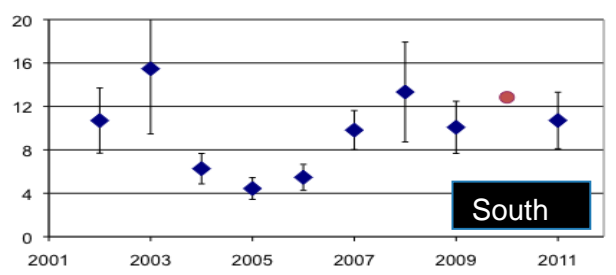
San Pablo



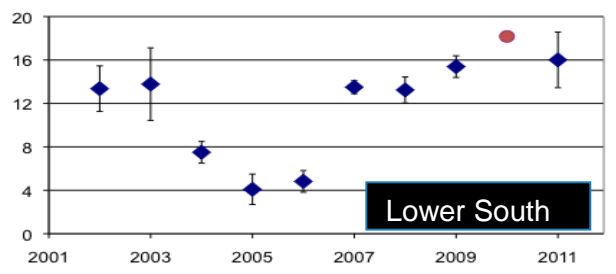
Central



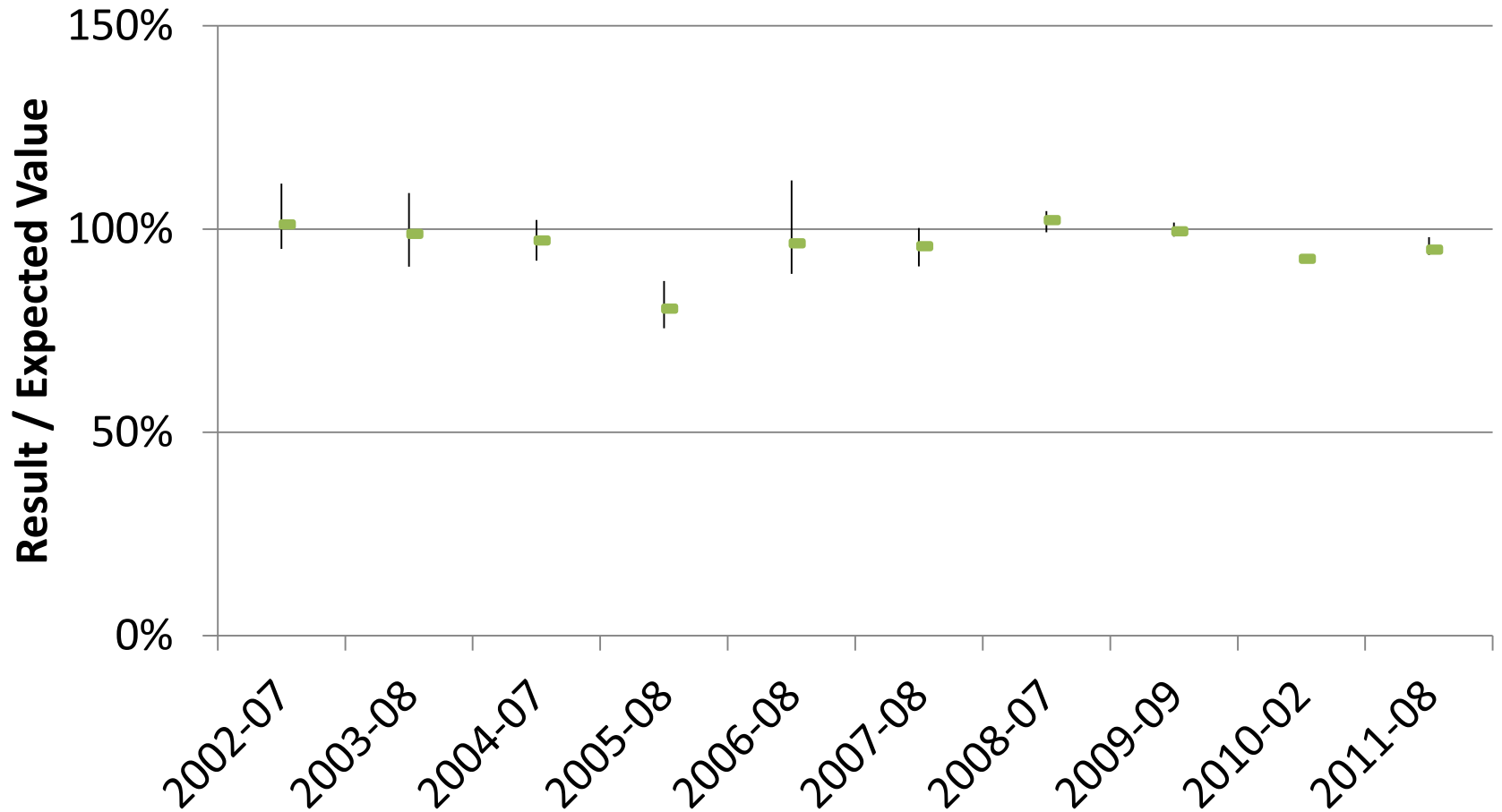
South



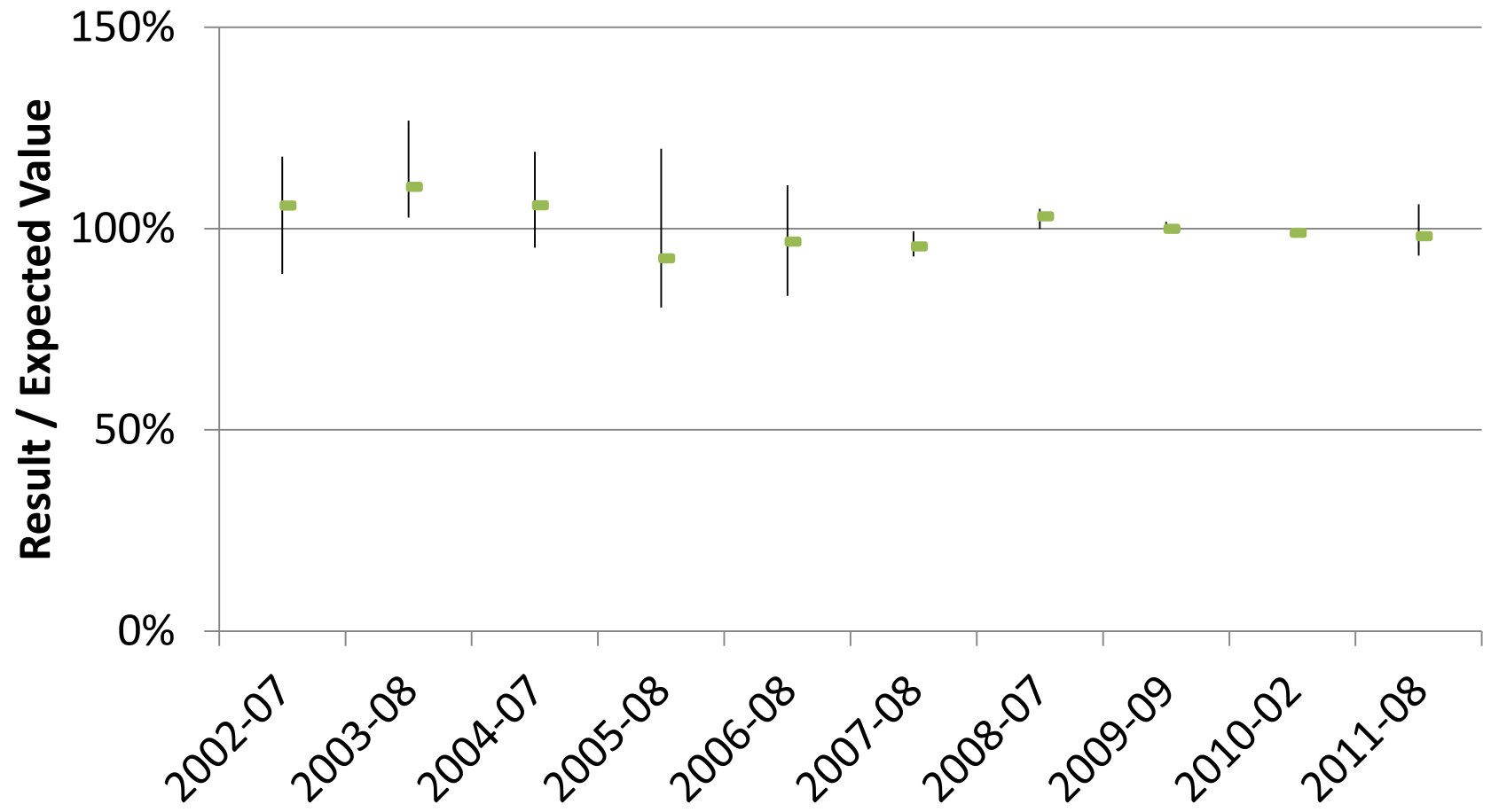
Lower South



QAQC: CRM Recoveries $\Sigma 40$ PCBs

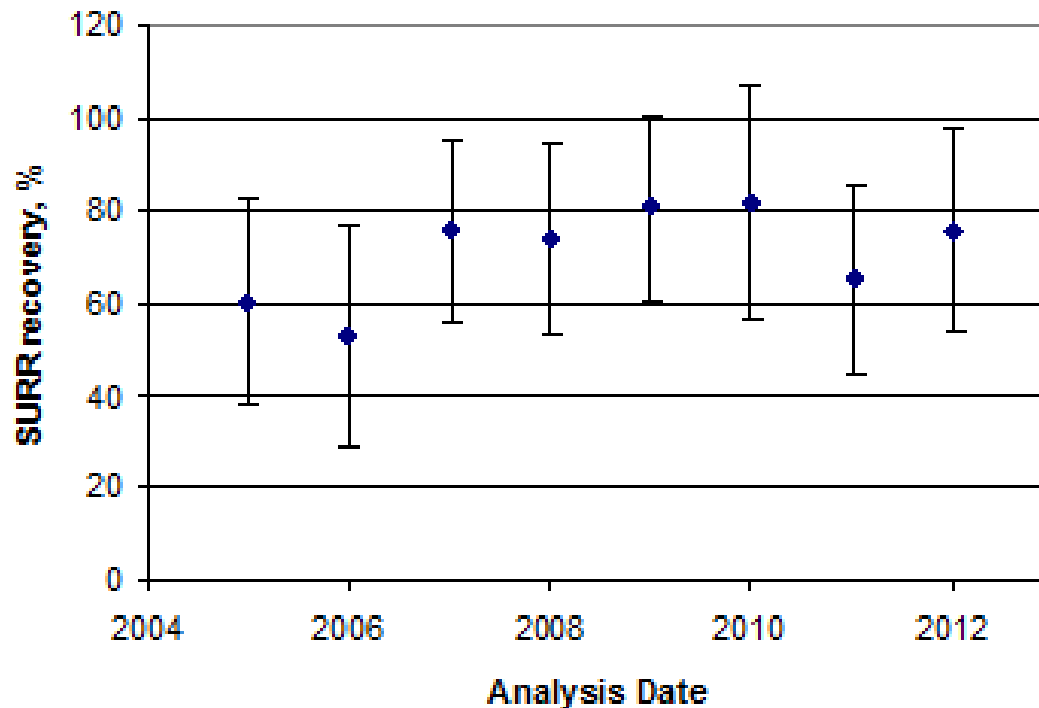


QAQC: MS Recoveries ($\Sigma 40$ PCB)



EBMUD Review: Surrogates

- Surrogate recoveries $\sim 20\%$ lower but within method limits – results surrogate corrected

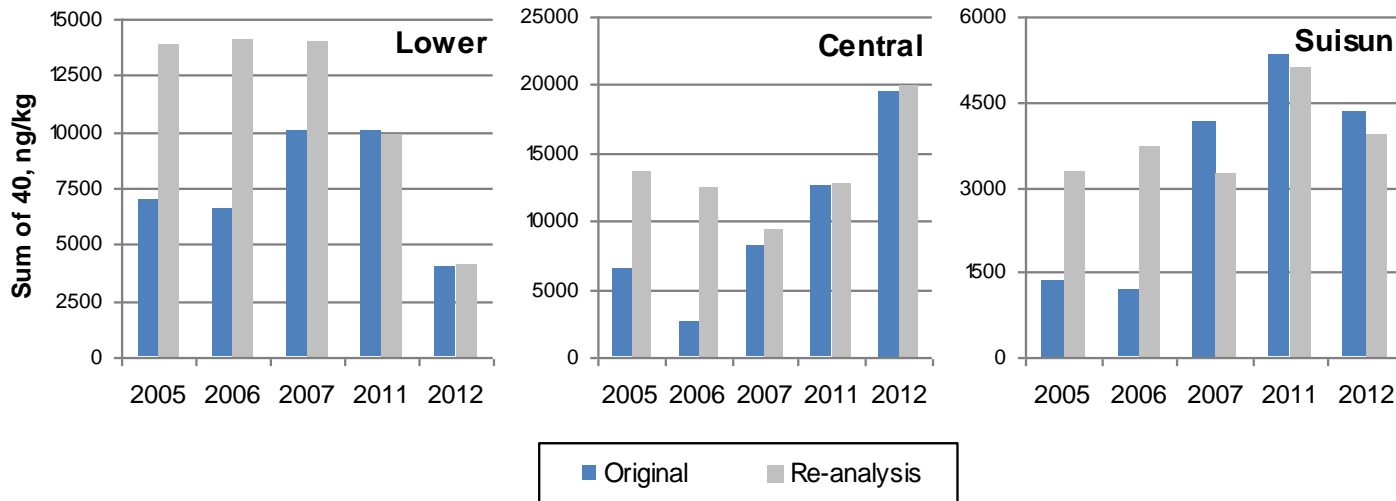


EBMUD Review

- Possible causes of change were improved sample drying and GPC cleanup
 - MS & CRM recoveries seem unaffected
 - Cleanup surrogate recoveries consistently high, likely minimal impact of GPC changes
- Sample drying method change most likely cause
 - Decant – sampling handling recommended for GC-ECD
 - Funnel – sample handling recommended for HRGC/HRMS

Sample Reanalysis

- Samples: BA10 (LSB), BC11(CB), & BF21(SU)
- Years 2005, 2006, 2007, 2011,2012
- Reanalyzed by current method

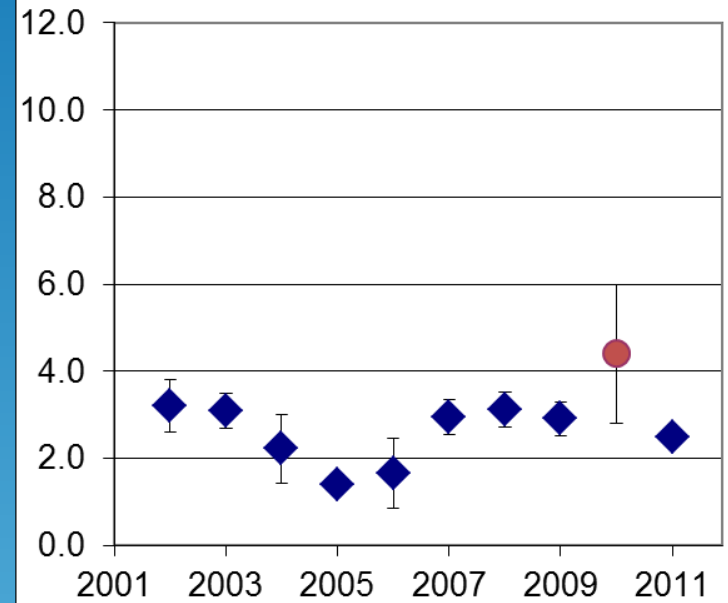
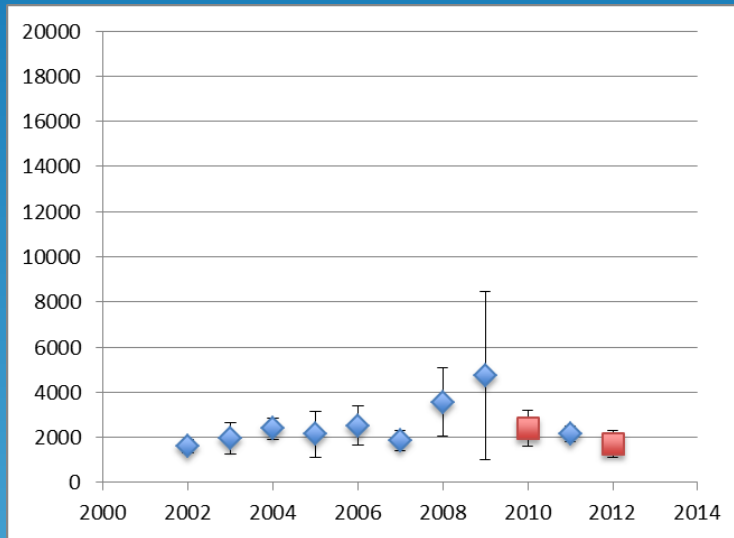


Current Status

- PCB data for 2004 -2006 have been removed from website (CD3)
- EBMUD is running samples from same 3 sites for the same 5 years to see whether there are similar issues (pro bono)
- Schedule
 - Pesticides: Have some extracts (2005-2007) in-hand and ready to run. Need to extract some samples. Anticipate having report of all results by March 15.
 - PAHs: 6 weeks after pesticides are run. April?
 - PBDEs: 8 weeks after PAHs are run. June?

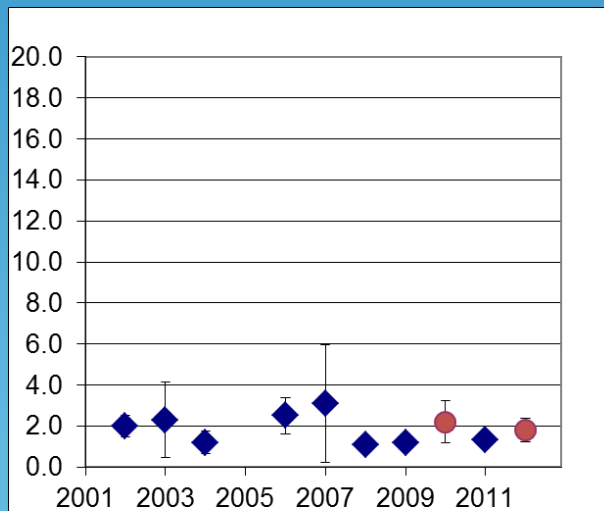
Whole Bay – PAH, DDT, & BDE209

PAH



DDT

BDE209



9

Friday, May 09, 2014

EBMUD Review

- 2002-2003 samples were reanalyses ca. 2010
- 2004-2006 “Low” period analyzed pre 2007
- Software peak calculation and data handling changes negligible impact