

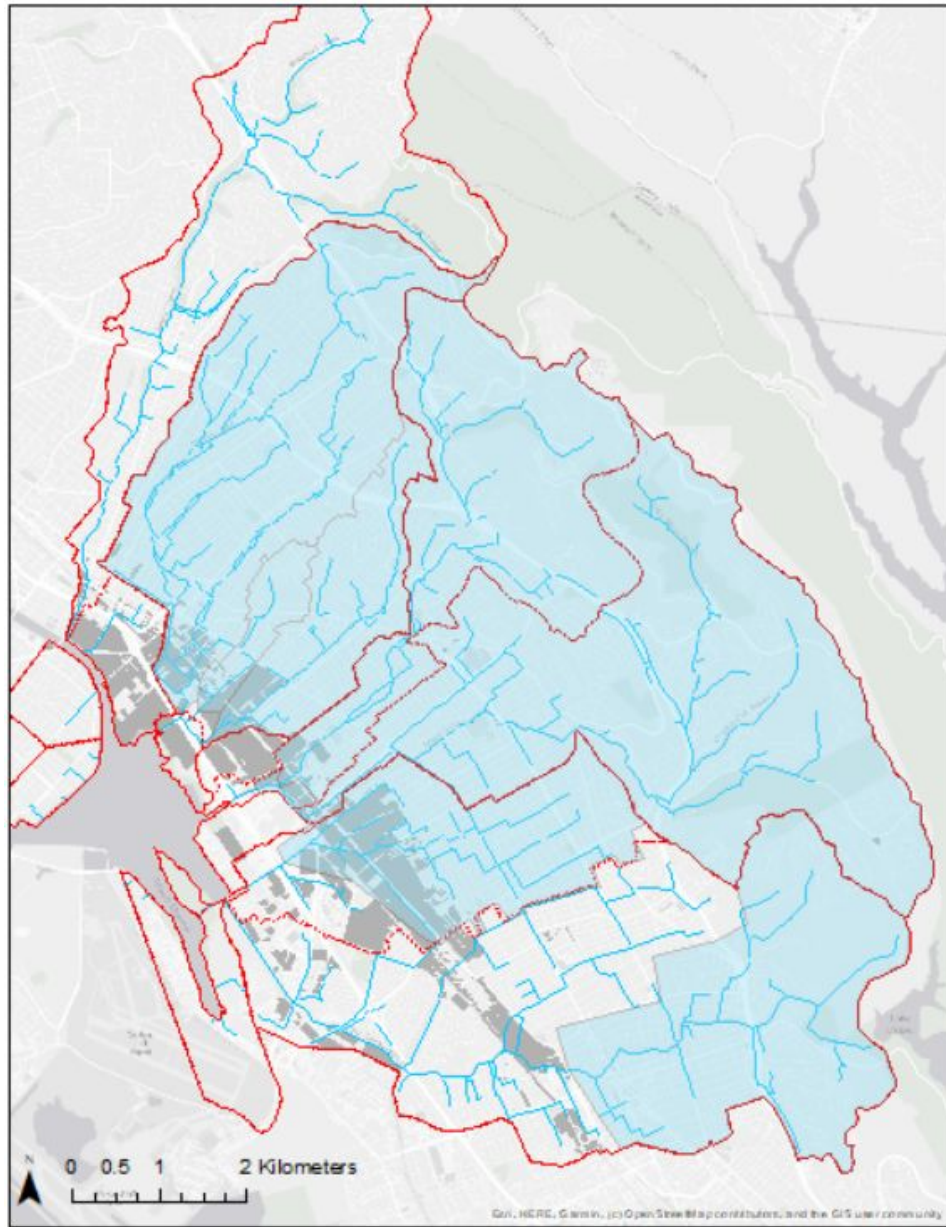


2024 SPLWG Special Study Proposal

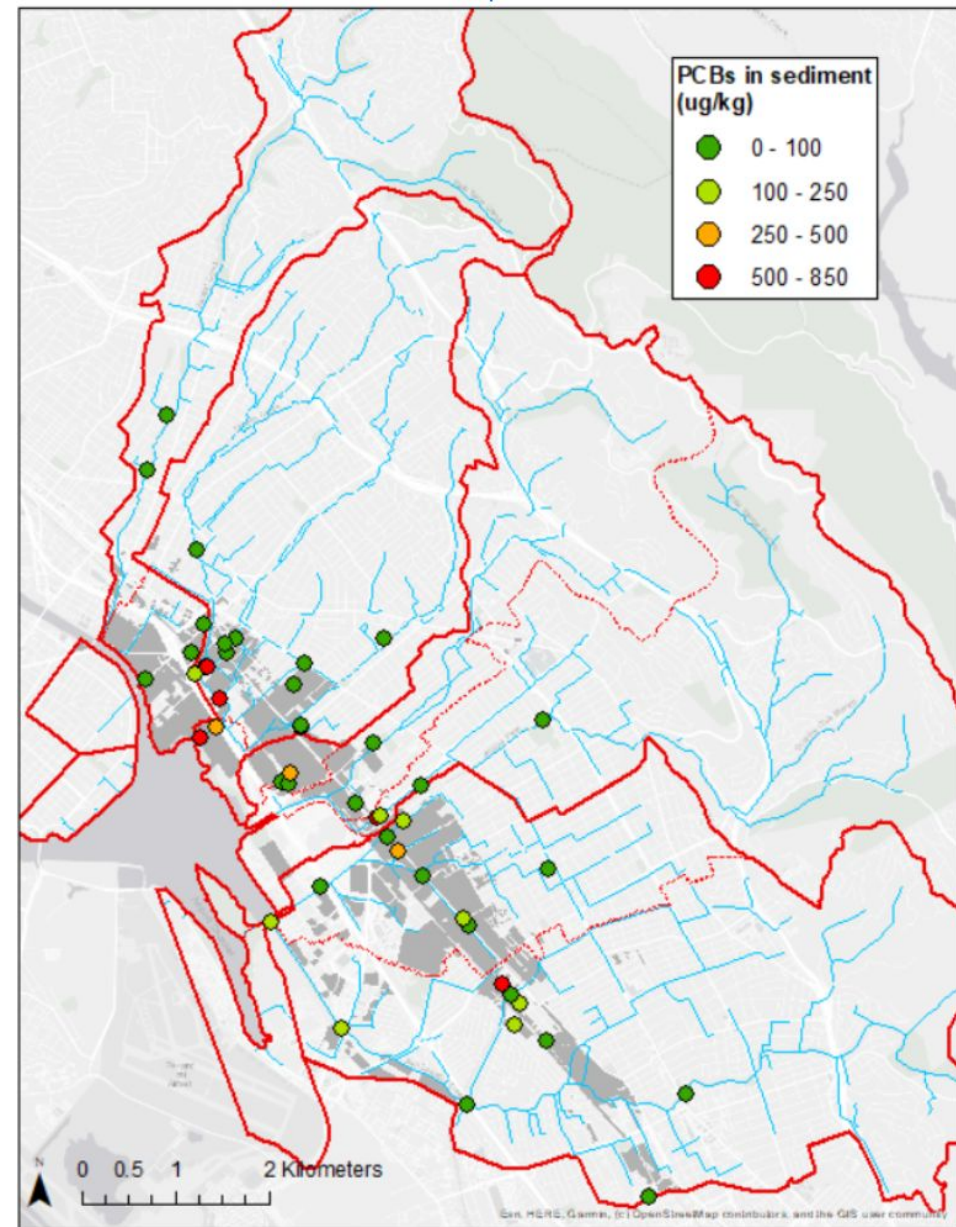
Understanding the Utility of Using a Detection Dog Team for Source Tracing of PCBs

Jennifer Dougherty, Alicia Gilbreath

Stormwater Sampling



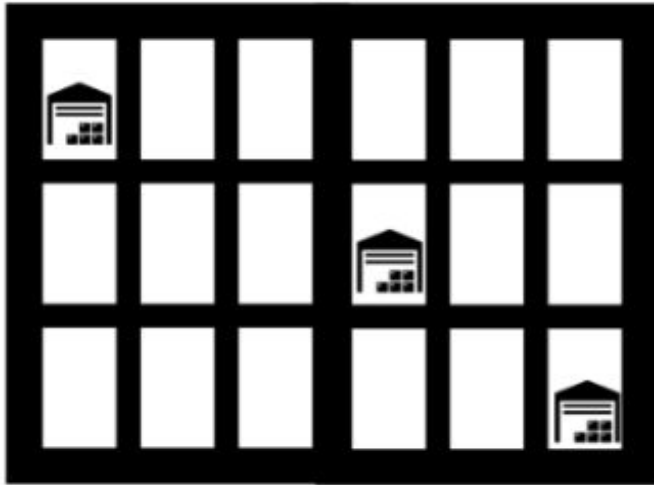
Soil/Sediment Sampling



**Julianne & Jasper - FieldLab LLC
UW Conservation Canines Program**



Search Scenarios



Suspected PCB Property Area Search

Have an idea of target building



Broad Area Search

Do not know where targets are - walk the area for
odor on the wind



Drainage System Mapping

an be done through pick-hole or sampling from mainline for dog
to screen at surface

Julianne & Jasper in 2021 Spokane Field Evaluations



Project Goals

- Determine if using detection dogs in PCB source tracing efforts in the Bay Area is resource-efficient
 - Applicability
 - Scalability
- Lay groundwork that will allow for the streamlined implementation of the canine PCB detection method if deemed appropriate

Budget

- \$25k



Approach

- Task 1- Collaborate with stakeholders to:
 - Identify PCB methods
 - Sample types
 - Survey area types
 - Land use category types
 - Working with property owners
- Task 2 - Collaborate with FieldLab LLC
 - Cost and Pace
 - Scalability
- Task 3 - Determine cost-effectiveness

