

An aerial photograph of the Golden Gate Bridge in San Francisco, California. The bridge is a prominent red-orange color, stretching across the water. The surrounding landscape is hilly and green, with winding roads and some buildings visible in the distance. The water is a dark green color.

Regulatory Update

SF Bay Mercury Research Coordination Meeting
January 2010

Carrie Austin (caustin@waterboards.ca.gov)

California Regional Water Quality Control Board
San Francisco Bay Region

SF Bay Region Mercury TMDLs

Walker Creek

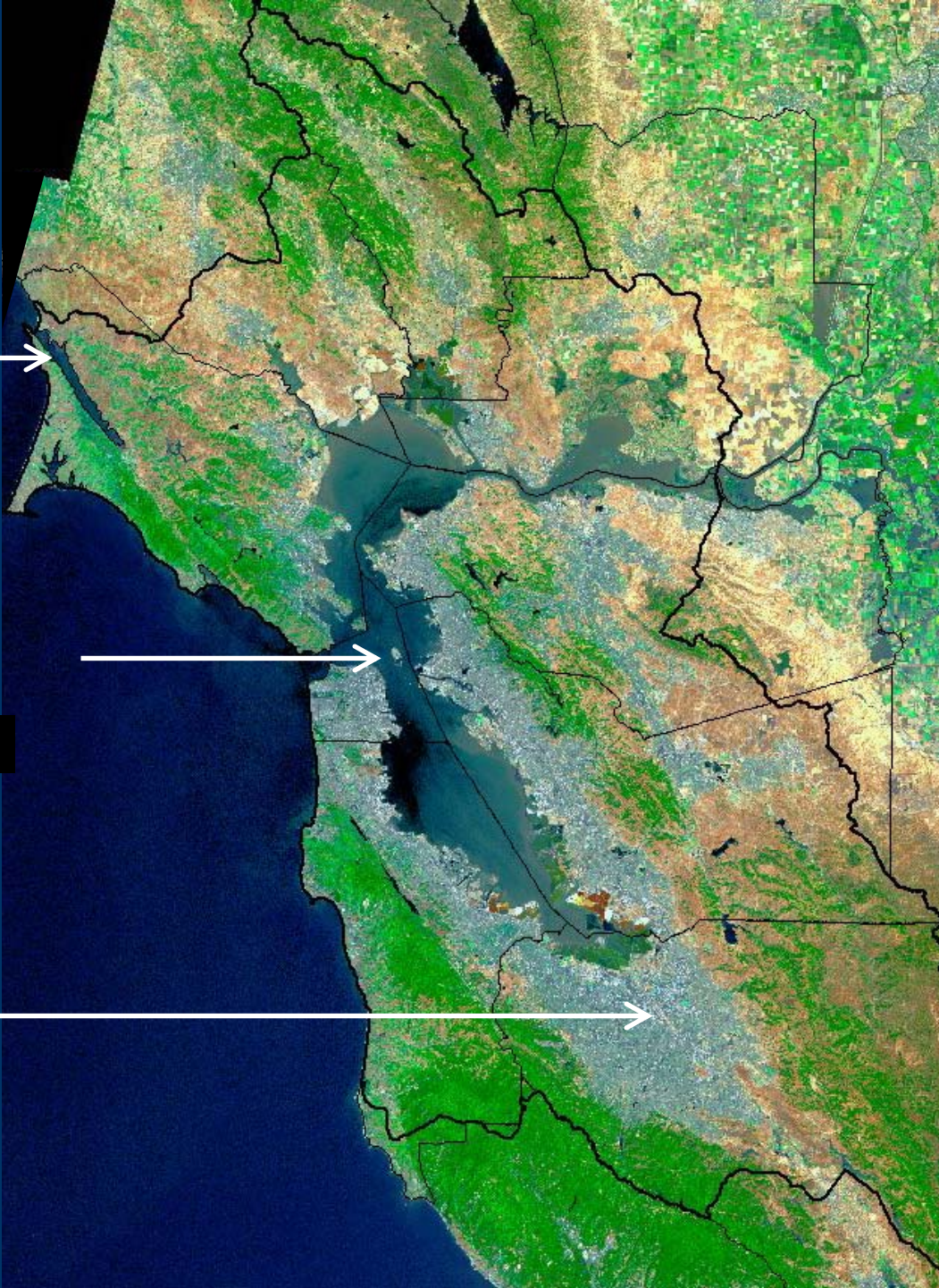


Tomales Bay

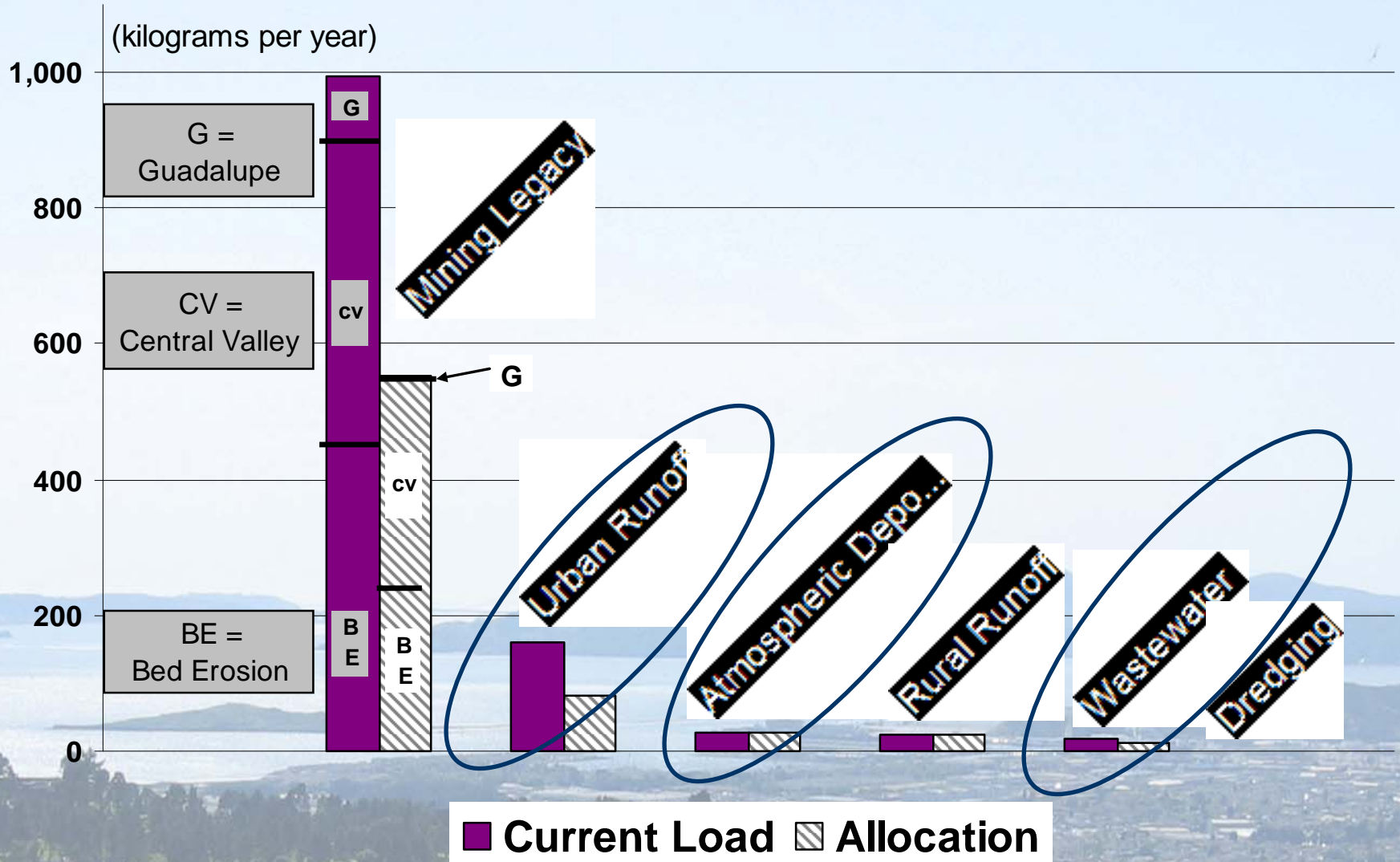
San Francisco Bay



Guadalupe River
Watershed

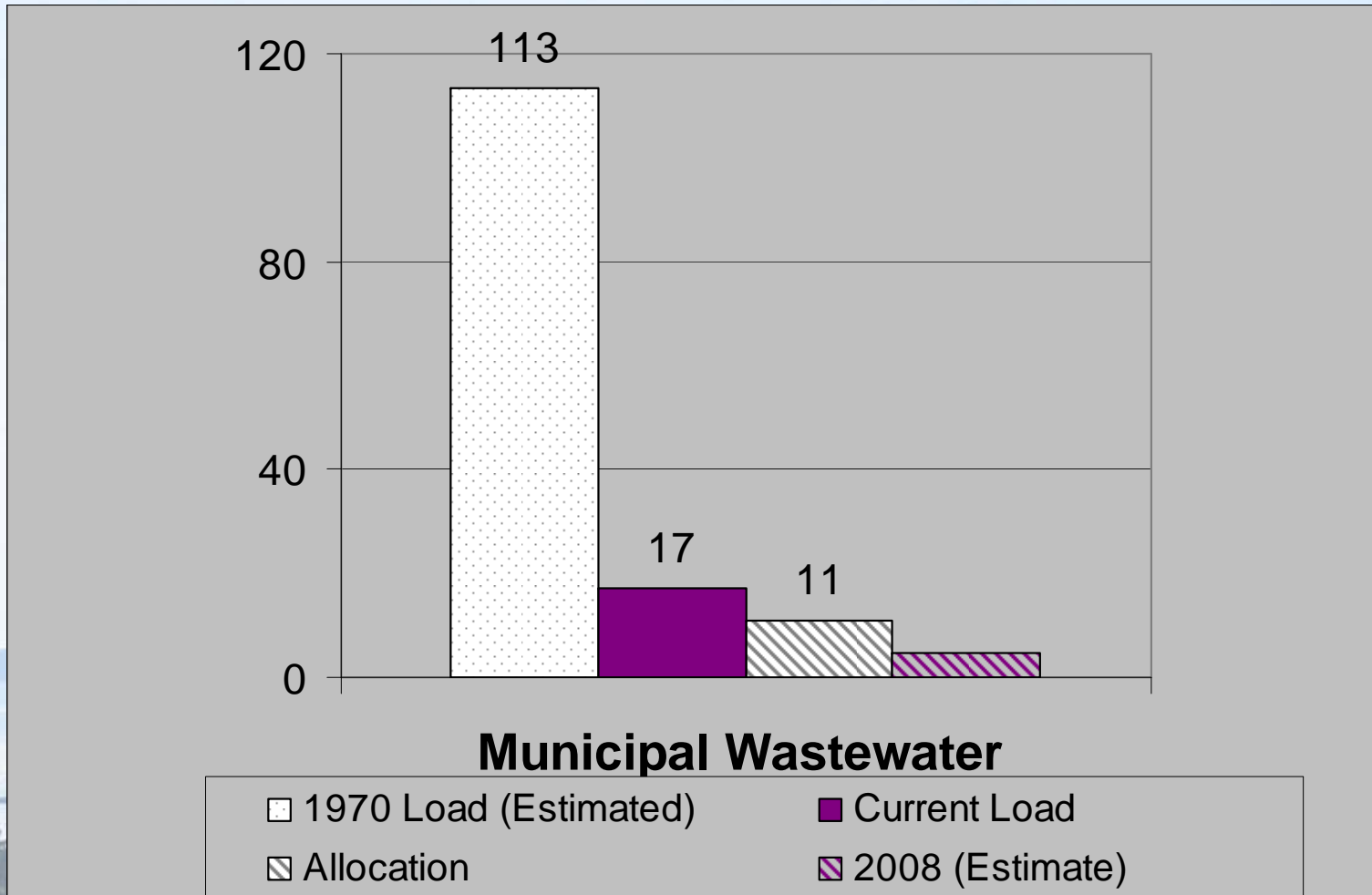


IMPLEMENTATION SF Bay Hg TMDL

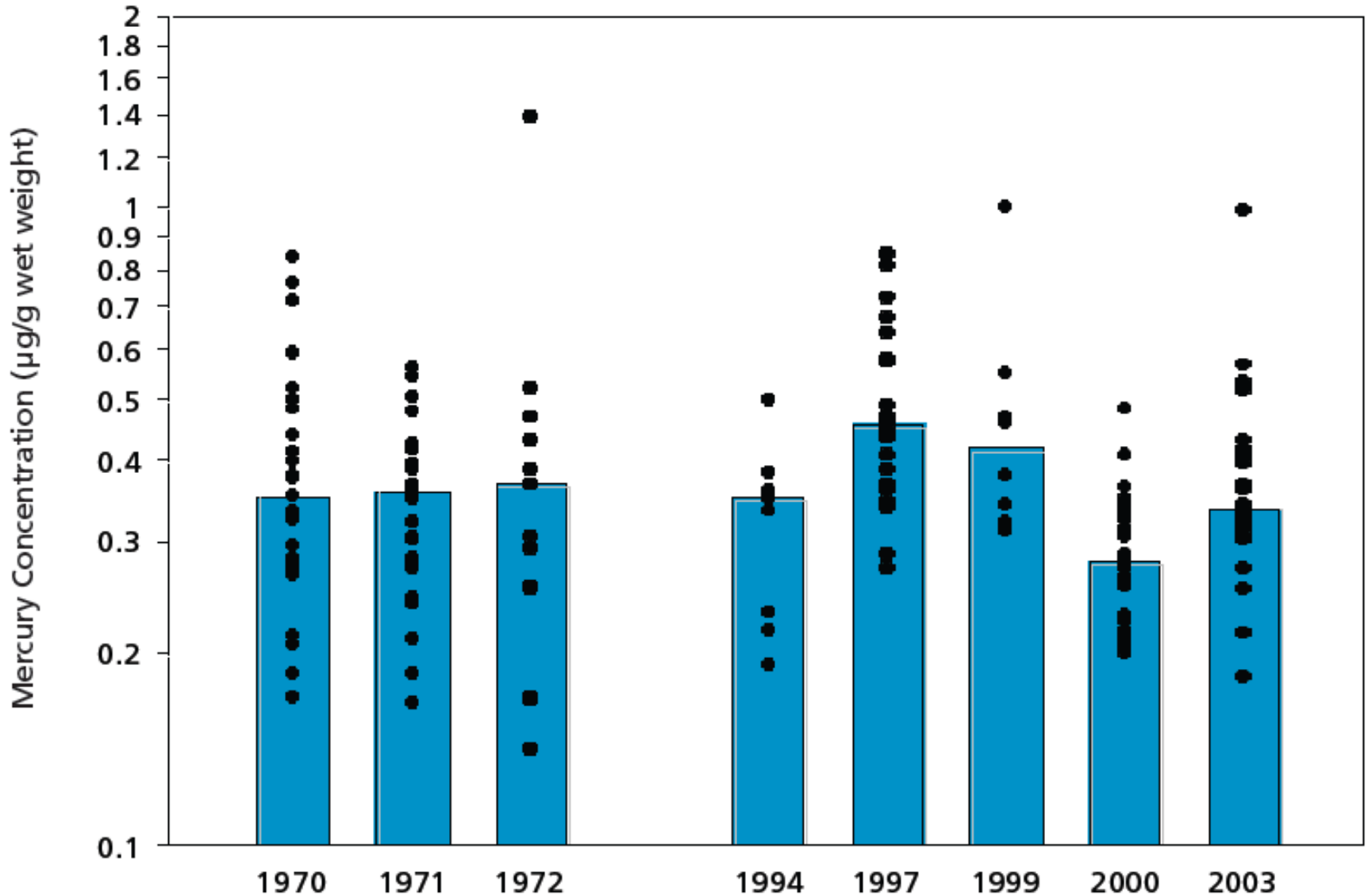


IMPLEMENTATION SF Bay Hg TMDL

Wastewater watershed permit



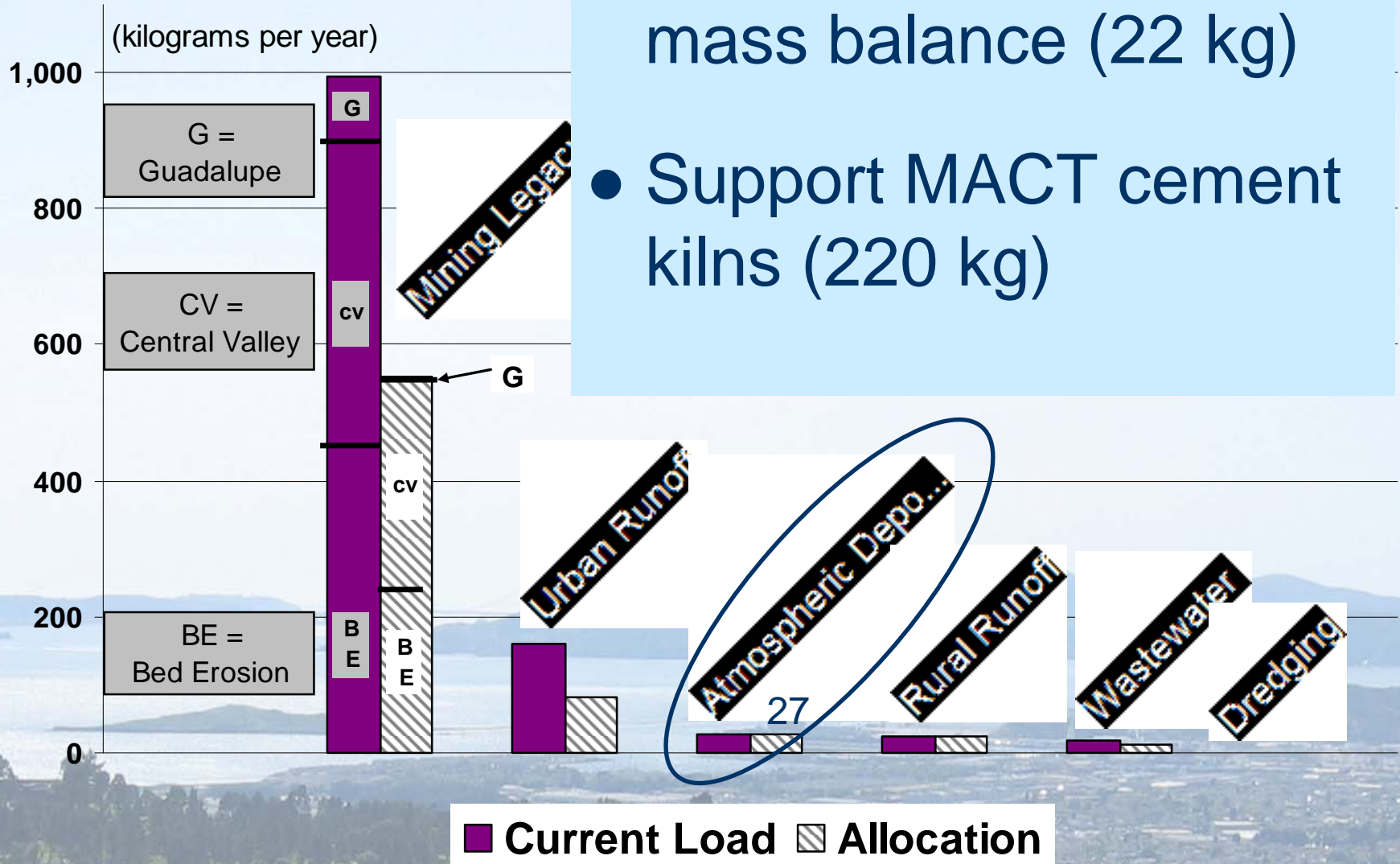
IMPLEMENTATION SF Bay



Courtesy of Jay Davis, SFEI

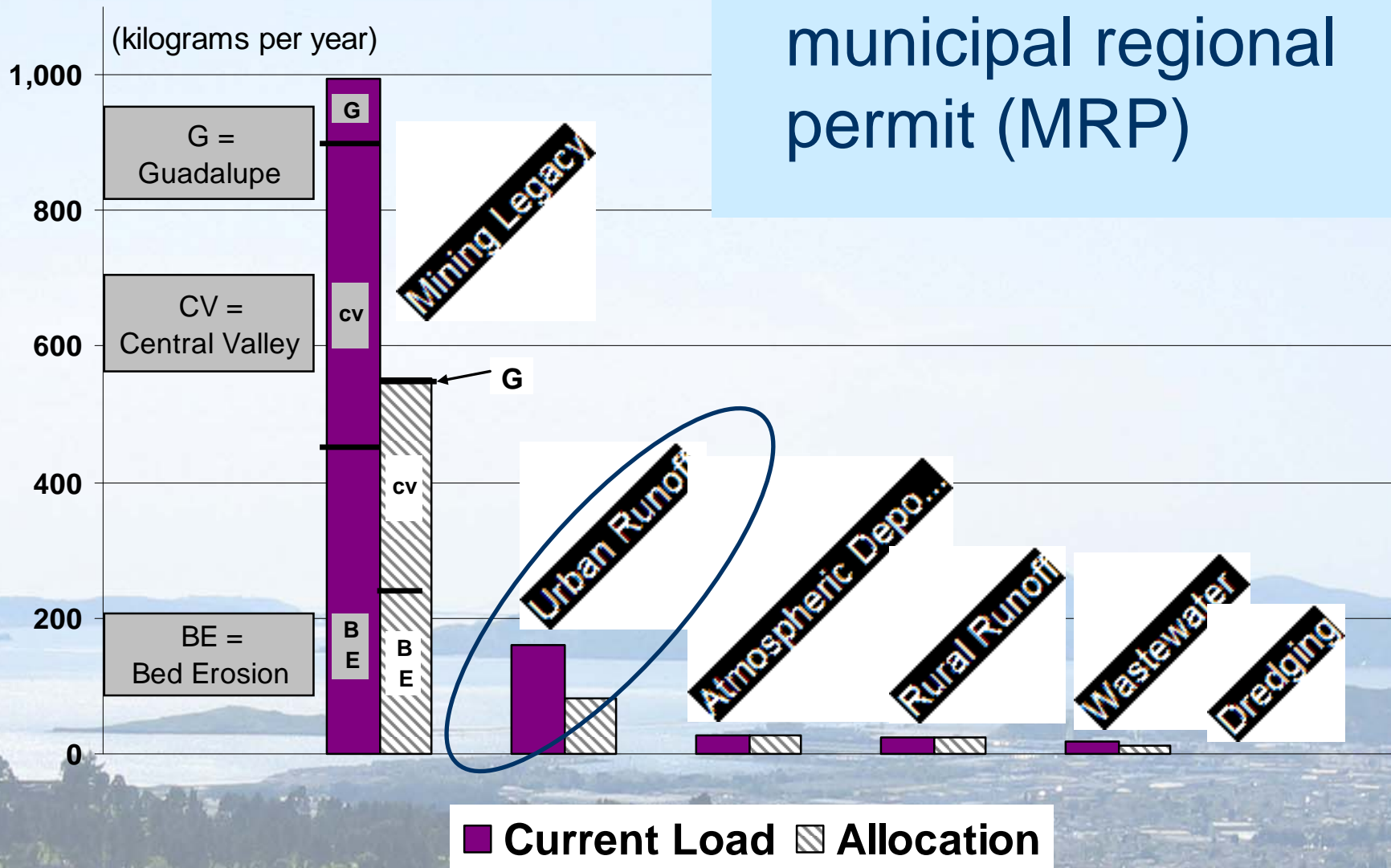
IMPLEMENTATION SF Bay Hg TMDL

- Petroleum refinery mass balance (22 kg)
- Support MACT cement kilns (220 kg)



IMPLEMENTATION SF Bay Hg TMDL

- Urban Runoff municipal regional permit (MRP)



IMPLEMENTATION

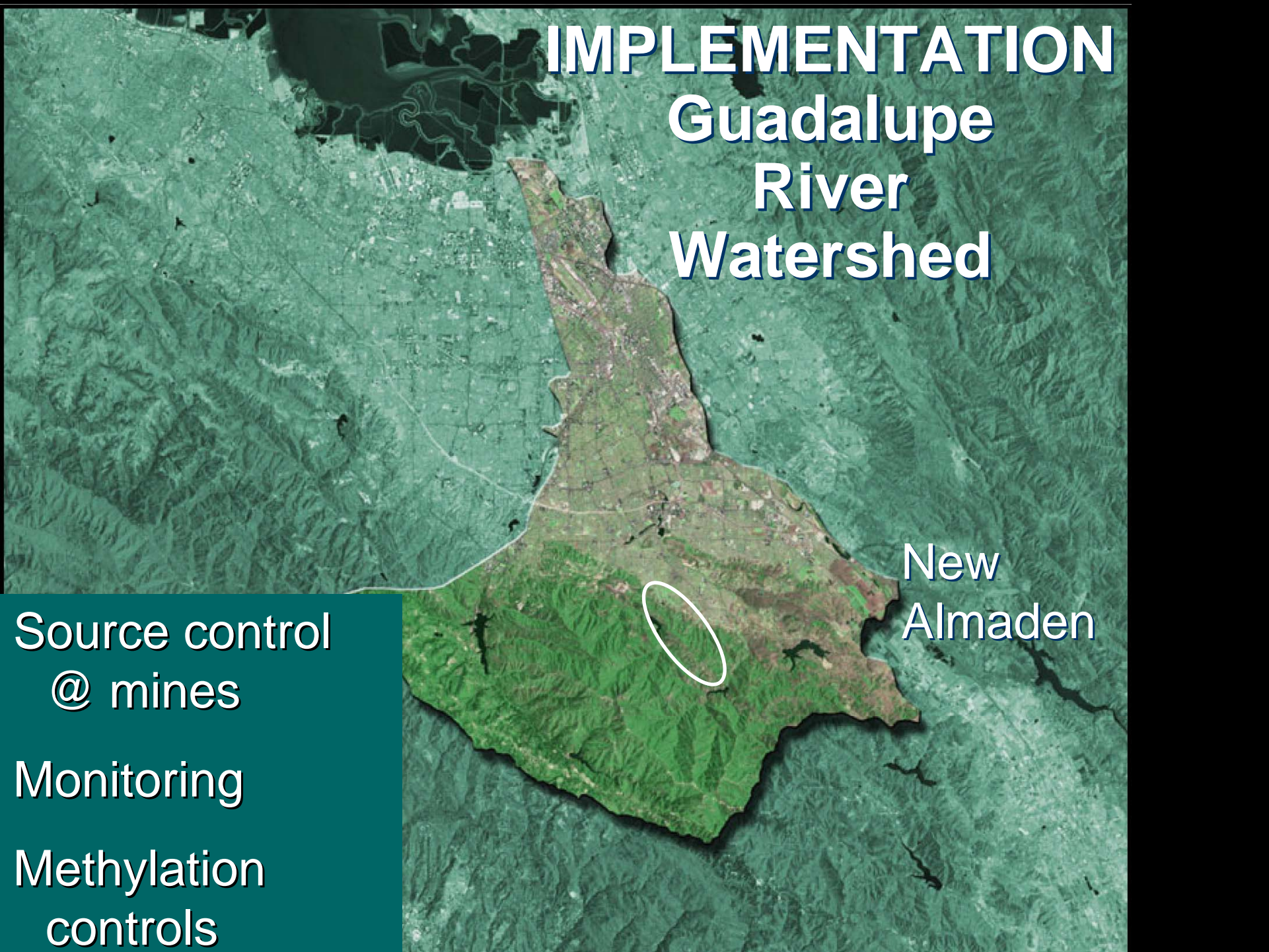
Guadalupe River Watershed

New Almaden

Source control
@ mines

Monitoring

Methylation
controls



IMPLEMENTATION Walker Creek



Tomales Bay Impairment Assessment



RMP Hg Strategy

An aerial photograph of the Golden Gate Bridge in San Francisco, California. The bridge is a prominent red-orange color, stretching across the water. The surrounding landscape is hilly and green, with winding roads and some buildings visible in the distance. The sky is clear and blue.

Q1: Where and when is mercury entering the food web?

Q2: Which processes, sources, and pathways contribute disproportionately to food web accumulation?

Q3: Opportunities for intervention for important pathways?