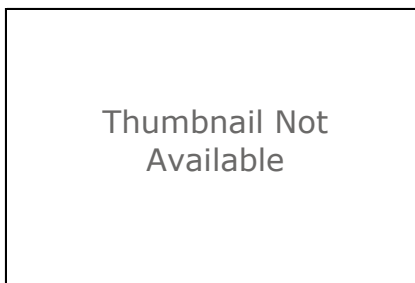


San Francisco Bay Area EcoAtlas



Tags
Estuarine Wetlands

Summary

The EcoAtlas was designed to support San Francisco Bay Area local and regional environmental planning and management. It has been developed with extensive public participation in conjunction with a number of partnerships including local agencies, non-governmental organizations, and university programs.

Description

The Bay Area EcoAtlas is a computer-based Geographic Information System (GIS) of past and present local ecology in the San Francisco Bay Area, California. It was designed to support local and regional environmental planning and management. The EcoAtlas represents the integration of many kinds of information from numerous sources, to compile a picture of the environmental past, the present, and change. It provided the most detailed regional views of past and present ecological conditions that were available at the time of creation. It is also a spatial template to view possible scenarios for environmental management in the future, and a geographic index for spatially-related environmental data and their sources. The EcoAtlas was envisioned to be the "base map" for local and regional environmental planning and protection.

Credits

San Francisco Estuary Institute

Use limitations

The San Francisco Estuary Institute grants each EcoAtlas recipient permission to use this data. This version of the EcoAtlas and its accompanying datasets are not to be re-distributed. Graphics created from this release can be included in documents released by each EcoAtlas user and his/her organization as long as the source citation includes "Bay Area EcoAtlas Version 1.50b4" and "San Francisco Estuary Institute".

Extent

There is no extent for this item.

Scale Range

There is no scale range for this item.

ArcGIS Metadata ▼

FGDC Metadata (read-only) ►

Identification ►

CITATION

CITATION INFORMATION

ORIGINATOR San Francisco Estuary Institute
 PUBLICATION DATE 1998
 TITLE
 San Francisco Bay Area EcoAtlas
 EDITION Version 1.50b4
 GEOSPATIAL DATA PRESENTATION FORM vector digital data
 PUBLICATION INFORMATION
 PUBLICATION PLACE Oakland, CA
 PUBLISHER San Francisco Estuary Institute
 ONLINE LINKAGE <http://sfei.org/ecoatlas>

DESCRIPTION

ABSTRACT

The Bay Area EcoAtlas is a computer-based Geographic Information System (GIS) of past and present local ecology in the San Francisco Bay Area, California. It was designed to support local and regional environmental planning and management. The EcoAtlas represents the integration of many kinds of information from numerous sources, to compile a picture of the environmental past, the present, and change. It provided the most detailed regional views of past and present ecological conditions that were available at the time of creation. It is also a spatial template to view possible scenarios for environmental management in the future, and a geographic index for spatially-related environmental data and their sources. The EcoAtlas was envisioned to be the "base map" for local and regional environmental planning and protection.

PURPOSE

The EcoAtlas was designed to support San Francisco Bay Area local and regional environmental planning and management. It has been developed with extensive public participation in conjunction with a number of partnerships including local agencies, non-governmental organizations, and university programs.

SUPPLEMENTAL INFORMATION

EcoAtlas data available for download includes the tidal and non-tidal habitats within the historical tidal extent of the San Francisco Bay Estuary. The original compilation of the data was part of the Bayland Ecosystem Habitat Goals project that sought to understand and quantify the landscape change from c.1850 to 1998. Goals for restoration of bayland habitats were in part based on this analysis. These data represent the on-the-ground conditions as of c.1850 and 1998. For more information, see (<http://www.sfei.org/node/2123>) Metadata was updated in 2007.

TIME PERIOD OF CONTENT

TIME PERIOD INFORMATION

RANGE OF DATES/TIMES

BEGINNING DATE 1850

ENDING DATE 1998

CURRENTNESS REFERENCE

ground condition

STATUS

PROGRESS In work

MAINTENANCE AND UPDATE FREQUENCY Irregular

KEYWORDS

THEME

THEME KEYWORD THESAURUS GCMD

THEME KEYWORD Estuarine Wetlands

PLACE

PLACE KEYWORD THESAURUS None

PLACE KEYWORD San Francisco Bay Area

ACCESS CONSTRAINTS

None

USE CONSTRAINTS

The San Francisco Estuary Institute grants each EcoAtlas receipt permission to use this data. This version of the EcoAtlas and its accompanying datasets are not to be re-distributed. Graphics created from this release can be included in documents released by each EcoAtlas user and his/her organization as long as the source citation includes "Bay Area EcoAtlas Version 1.50b4" and "San Francisco Estuary Institute".

POINT OF CONTACT

CONTACT INFORMATION

CONTACT PERSON PRIMARY

CONTACT PERSON Robin Grossinger

CONTACT ORGANIZATION San Francisco Estuary Institute

CONTACT POSITION Environmental Scientist

CONTACT ADDRESS

ADDRESS TYPE mailing and physical address

ADDRESS 4911 Central Avenue

CITY Richmond

STATE OR PROVINCE CA

POSTAL CODE 94804

CONTACT VOICE TELEPHONE 510-746-7380

DATA SET CREDIT

San Francisco Estuary Institute

Hide Identification ▲

Data Quality ►

LOGICAL CONSISTENCY REPORT

The Native Landscape View of the EcoAtlas is a composite picture based upon approximately 1000 independent sources of data. These include eighteenth- and nineteenth-century maps, sketches, paintings, photographs, engineering reports, oral histories, explorers' journals, missionary texts, hunting magazines, interviews with living elders, and other sources. Documents were selected from tens of thousands of materials examined at archives around the Bay Area and are catalogued in the project databases. Sufficient information about the native Bay Area landscape is available from early European documents to discover the distribution and abundance of many habitat types with confidence. With a robust amount of data, historical sources overlap and confirm (or contradict) each other, strengthening their interpretation. The intersection of discrete sources is then mapped and recorded in a database. This is the basic procedure used to compile the Native Landscape View of the EcoAtlas.

COMPLETENESS REPORT

While the Native Landscape View likely approximates pre-European conditions at a regional scale, with substantial local detail, it must be emphasized that substantial uncertainty may be present at a local scale. As part of the process of integrating data to form the composite picture, the relative certainty of each feature (e.g. a creek, marsh, or pond) has been recorded according to quantitative or qualitative standards (see Table 1) for presence, size, and location. The amount of uncertainty ranges, with regard to location, from 100 ft to 1 mile; with regard to size, from 10% to 100%; and with regard

to actual presence, from “definite” to “possible.” These individually coded attributes will enable EcoAtlas users to query the estimated amount of uncertainty associated with different places in the map, based on SFEI’s scholarship. However, the Source and Certainty Tables have not been completed to the point of linkage to the EcoAtlas at this time.

LINEAGE

PROCESS STEP

PROCESS DESCRIPTION

Feature classes subjectively chosen and converted from coverages to shapefiles for download. Metadata created from the written documentation also available as an enclosure with the metadata record as a MS Word document, and as an ASCII text document

PROCESS DATE 2011

Hide Data Quality ▲

Distribution Information ►

DISTRIBUTOR

CONTACT INFORMATION

CONTACT ORGANIZATION PRIMARY

CONTACT ORGANIZATION San Francisco Estuary Institute

CONTACT POSITION GIS Manager

CONTACT ADDRESS

ADDRESS TYPE mailing and physical address

ADDRESS 4911 Central Avenue

CITY Richmond

STATE OR PROVINCE CA

POSTAL CODE 94804

CONTACT VOICE TELEPHONE 510-746-7342

CONTACT FACSIMILE TELEPHONE 510-746-7300

DISTRIBUTION LIABILITY

In no event shall the creators, custodians, or distributors of this information be liable for any damages arising out of its use (or the inability to use it). These data are not legal documents or of survey quality and are not intended to be used as such. Although extensive effort has been made to produce error-free and complete data, all geographic information has limitations due to the scale, resolution, date and interpretation of the original source materials. Users should consult available data documentation (metadata) for these particular data to determine limitations and the precision to which the data depict distance, direction, location or other geographic characteristics. Data may be subject to change without prior notification. If this data is modified, changes should be documented in a metadata record that should accompany all redistributed data. If data is transmitted or provided in any form to another user, the data must be accompanied by a copy of this disclaimer and all documentation provided with the original data set, including the full metadata record. SFEI requests that the use of these data in any map, publication, or report should cite the data source(s) used and give proper attribution and credit to the originators of the data.

AVAILABLE TIME PERIOD

TIME PERIOD INFORMATION

RANGE OF DATES/TIMES

BEGINNING DATE 1850

ENDING DATE 1998

Hide Distribution Information ▲

Metadata Reference ►

METADATA CONTACT

CONTACT INFORMATION

CONTACT ORGANIZATION PRIMARY

CONTACT ORGANIZATION San Francisco Estuary Institute

CONTACT POSITION GIS Manager

CONTACT ADDRESS

ADDRESS TYPE mailing and physical address

ADDRESS 4911 Central Avenue

CITY Richmond

STATE OR PROVINCE CA

POSTAL CODE 94804

CONTACT VOICE TELEPHONE 510-746-7334

METADATA STANDARD NAME FGDC Content Standards for Digital Geospatial Metadata

Hide Metadata Reference ▲