

APPENDIX B: ADDITIONAL T-SHEET IMAGES
WITH CONTEMPORARY OVERLAYS

This appendix displays digital images and digitized versions of 19 historical US Coast Survey T-sheets of the Southern California coast. Each T-sheet is shown in a two page spread. The spreads show the full T-sheet (on the left), and the corresponding GIS layer of the T-sheet over modern imagery (on the right). Please note the legend is standardized; not all features are necessarily shown on each T-sheet.

For full description of the project, and display of the other seven digitized T-sheets, please see the report:

Grossinger, RM, ED Stein, KN Cayce, RA Askevold, S Dark, and AA Whipple 2011.
Historical Wetlands of the Southern California Coast: An Atlas of US Coast Survey T-sheets, 1851-1889. San Francisco Estuary Institute Contribution #586 and Southern California Coastal Water Research Project Technical Report #589.

Also available at www.caltsheets.org.



Figure B1. Location of T-sheets.



Figure B3. Coastal features digitized from T-1267 overlaid on modern aerial photography (USDA 2005), at same scale as facing T-sheet.


REGISTER N ^o .:	T-1230
PUBLISHED:	1870
SURVEYOR:	W.E. GREENWELL AND S. FORNEY
<div>N </div>	0 1,000 2,000 4,000 6,000 8,000 Feet
	0 500 1,000 2,000 Meters



Figure B4. T-1230.

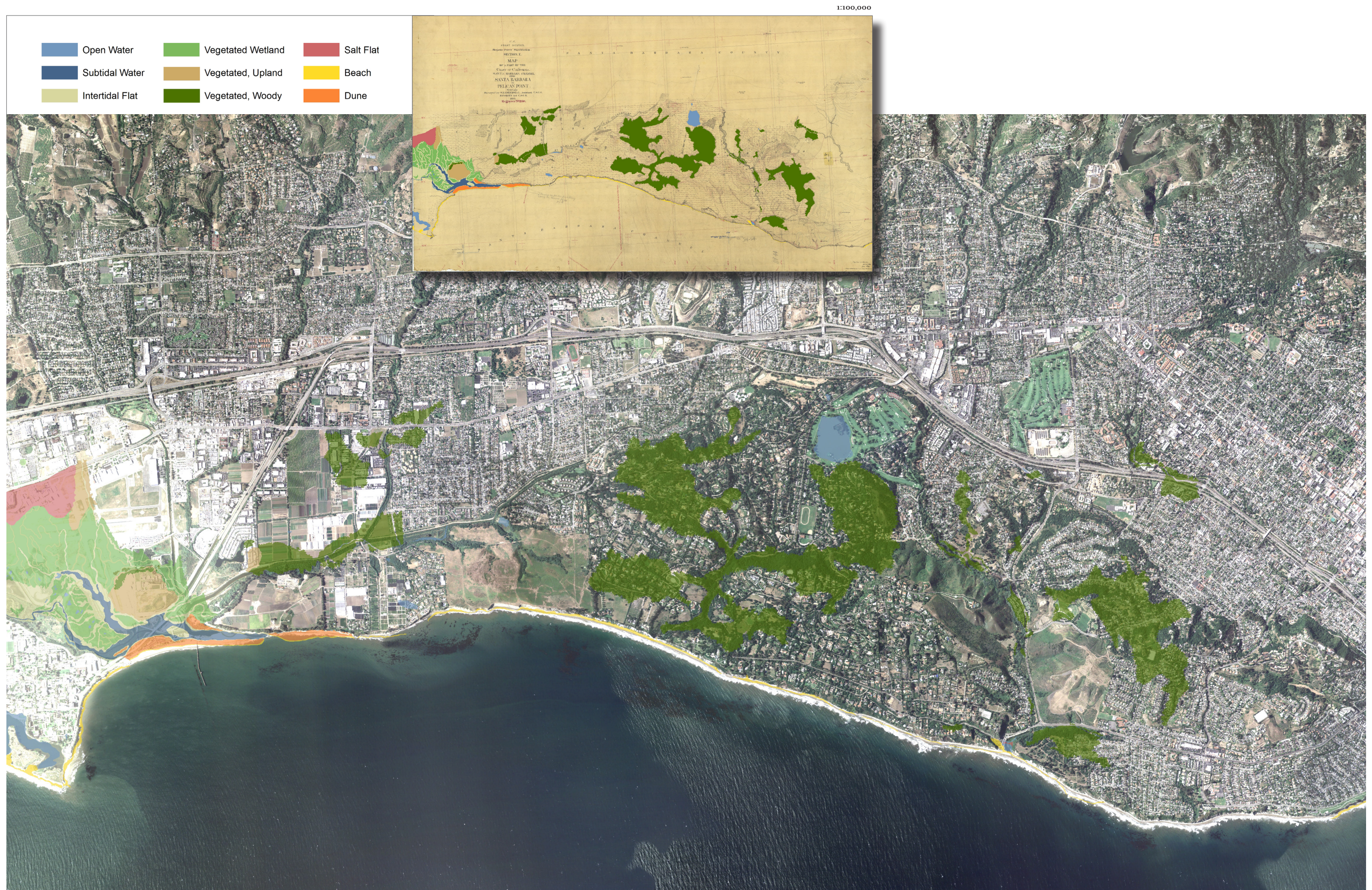


Figure B5. Coastal features digitized from T-1230, overlaid on modern aerial photography (USDA 2005), at same scale as facing T-sheet.



Figure B7. Coastal features digitized from T-373, overlaid on modern aerial photography (USDA 2005), at same scale as facing T-sheet.



Figure B9. Coastal features digitized from T-1128, overlaid on modern aerial photography (USDA 2005), at same scale as facing T-sheet.

REGISTER N°.:T-1127

PUBLISHED:1869

SURVEYOR:W.E. GREENWELL AND S. FORNEY

N

01,0002,0004,0006,0008,000

Feet

05001,0002,000

Meters

1:34,000



Figure B10. T-1127.

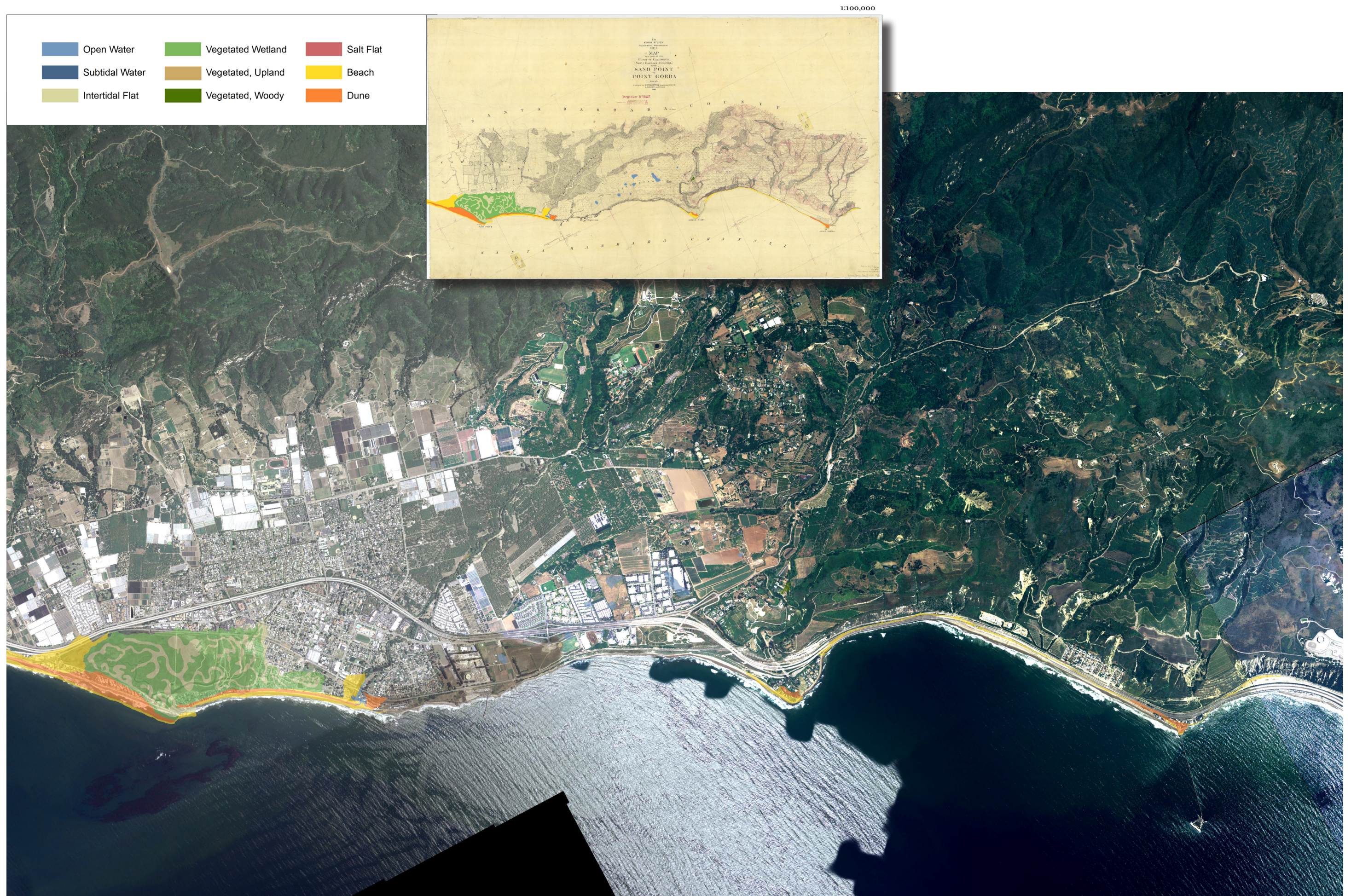



Figure B11. Coastal features digitized from T-1127, overlaid on modern aerial photography (USDA 2005), at same scale as facing T-sheet.

REGISTER N ^o .: T-683	
PUBLISHED: 1855	
SURVEYOR: W.M. JOHNSON	
<div>N</div> 	0 1,000 2,000 4,000 6,000 8,000 Feet
	0 500 1,000 2,000 Meters
1:34,000	

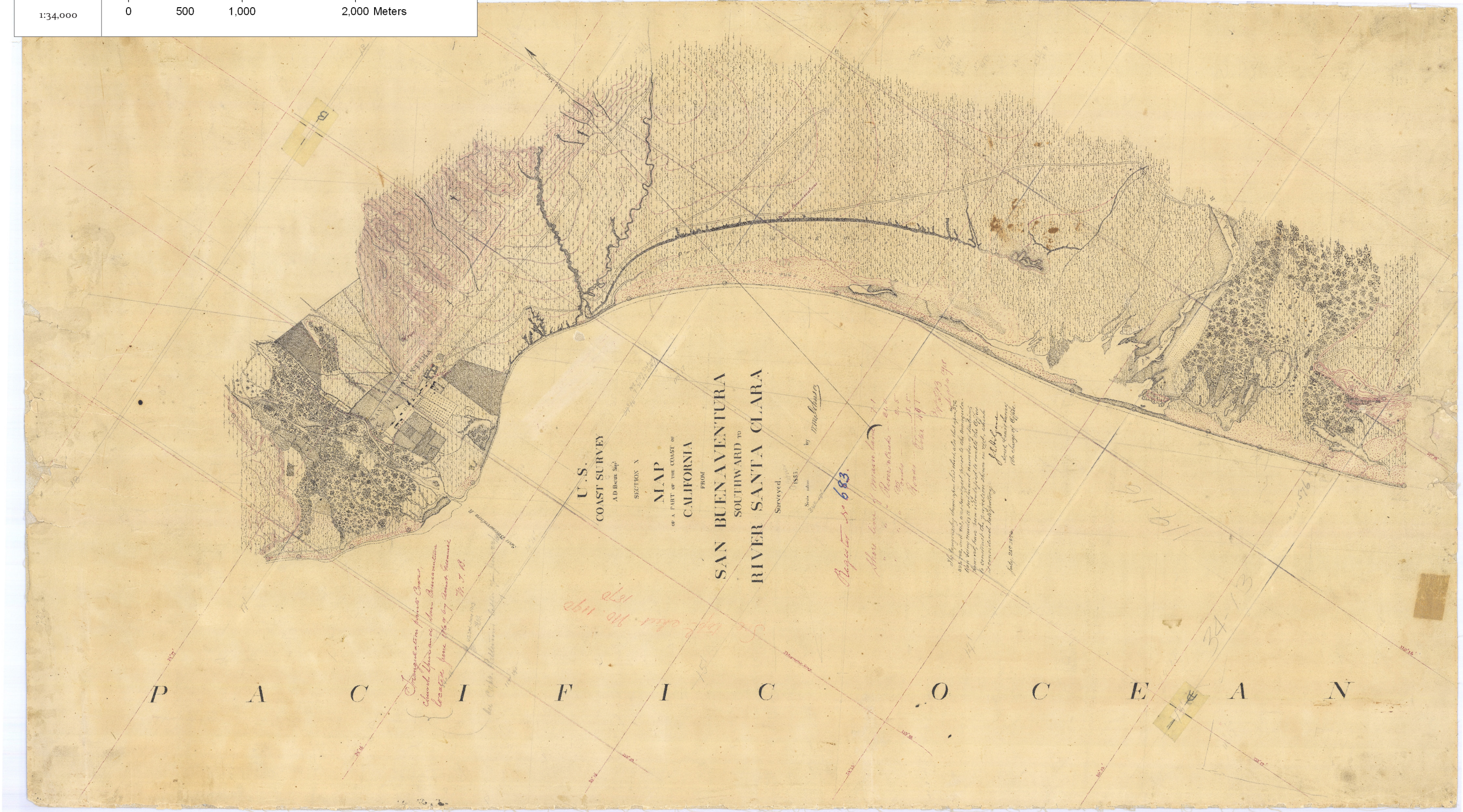


Figure B12. T-683.

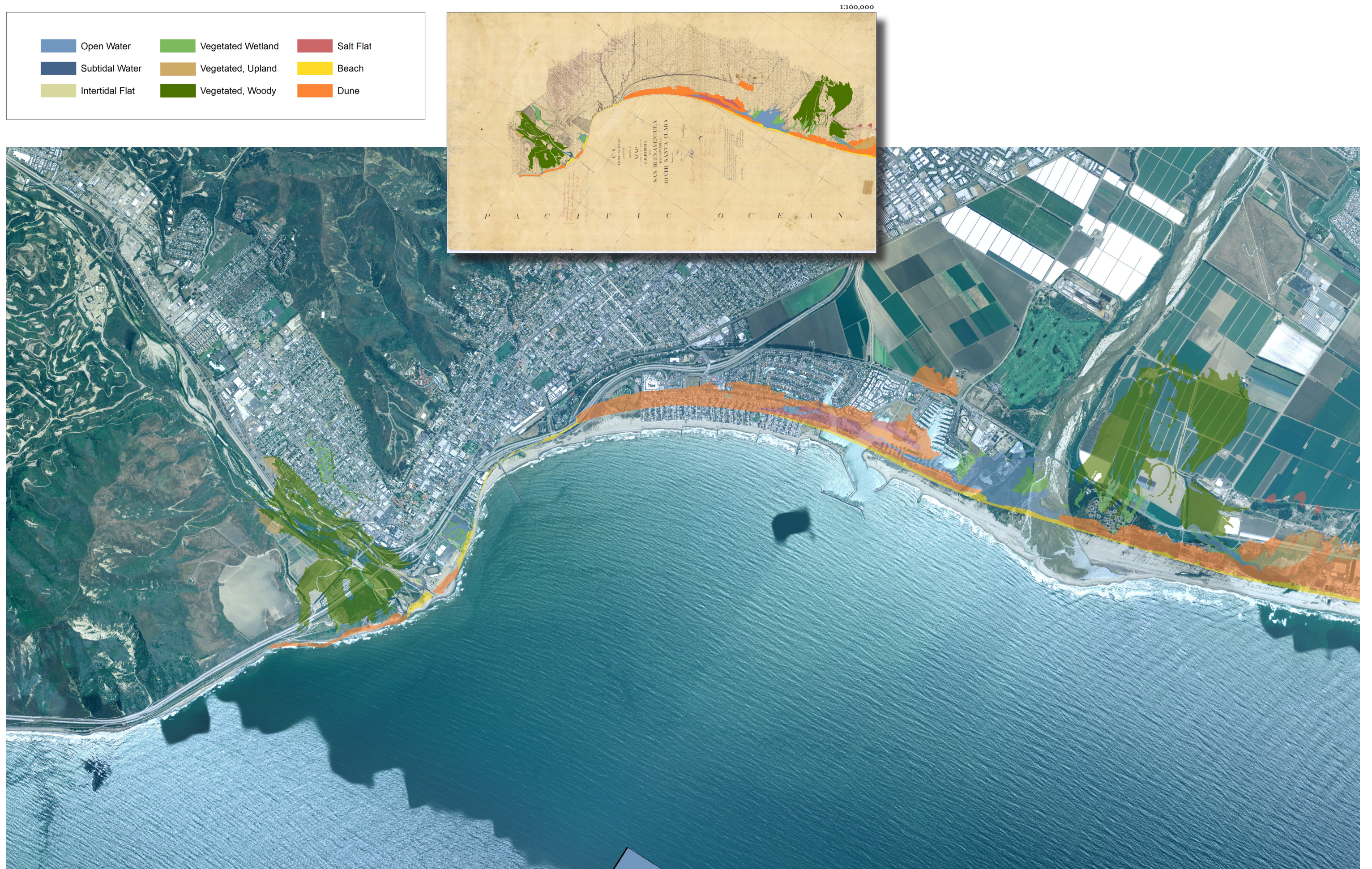


Figure B13. Coastal features digitized from T-683, overlaid on modern aerial photography (USDA 2005), at same scale as facing T-sheet.


REGISTER N ^o .:	T-1427
PUBLISHED:	1875-1876
SURVEYOR:	A.W. CHASE
<div><div>N</div></div>	0 1,000 2,000 4,000 6,000 8,000 Feet
	0 500 1,000 2,000 Meters



Figure B14. T-1427.

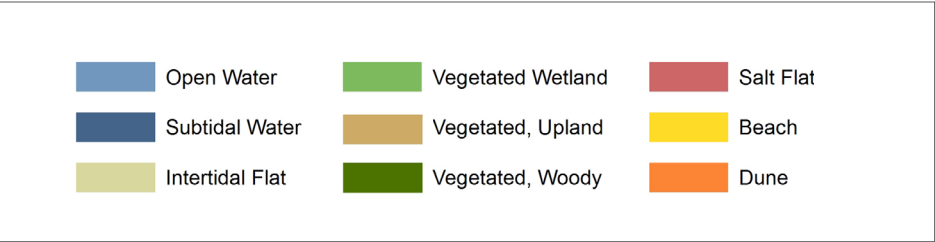


Figure B15. Coastal features digitized from T-1427, overlaid on modern aerial photography (USDA 2005), at same scale as facing T-sheet.

REGISTER No.:	T-892
PUBLISHED:	1859
SURVEYOR:	W.M. JOHNSON
<div><div><div><div>N</div><div></div></div><div></div></div><div><div>0</div><div>1,000</div><div>2,000</div><div>4,000</div><div>6,000</div><div>8,000 Feet</div></div></div> <div><div>0</div><div>500</div><div>1,000</div><div>2,000 Meters</div></div>	

1:34,000



Figure B16. T-892.

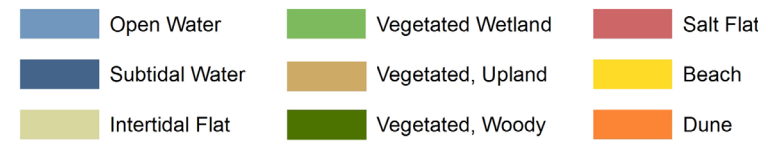


Figure B17. Coastal features digitized from T-892, overlaid on modern aerial photography (USDA 2005), at same scale as facing T-sheet.

REGISTER No.: T-1283

PUBLISHED: 1872

SURVEYOR: A. W. CHASE

N

01,0002,0004,0006,0008,000

Feet

05001,0002,000

Meters

1:34,000

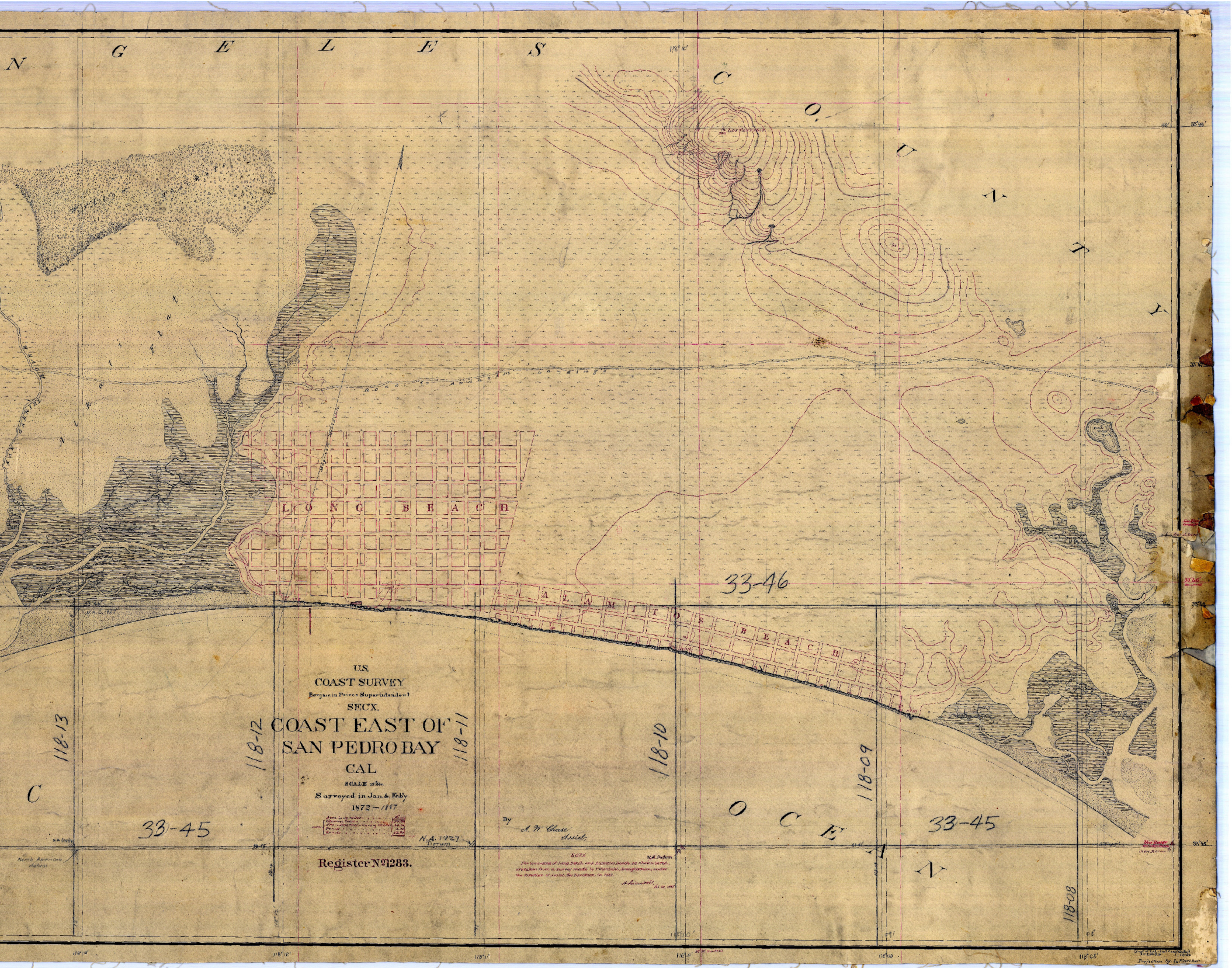


Figure B18. T-1283.

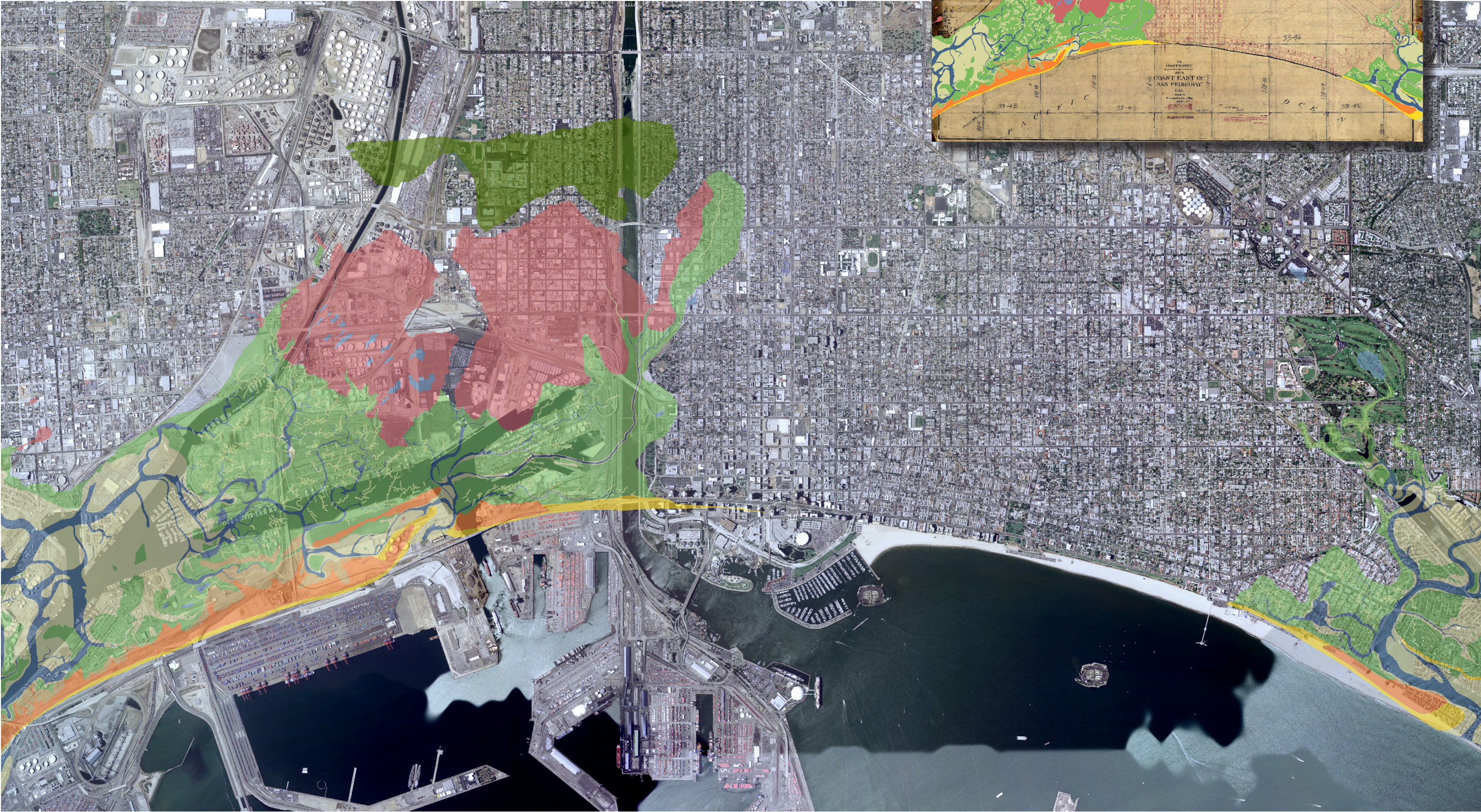
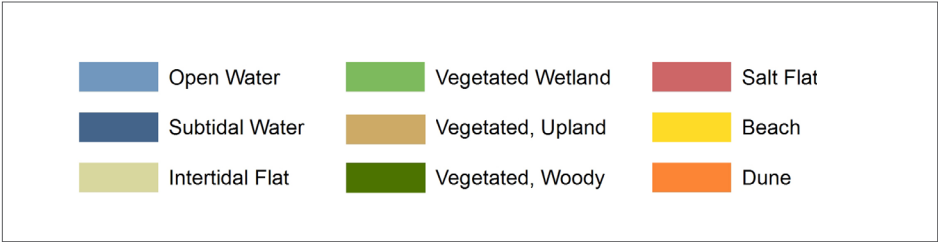


Figure B19. Coastal features digitized from T-1283, overlaid on modern aerial photography (USDA 2005), at same scale as facing T-sheet.

REGISTER No.:	T-1369
PUBLISHED:	1874
SURVEYOR:	A. W. CHASE
<div><div><div>N</div><div></div></div><div><div>01,0002,0004,0006,0008,000</div><div>Feet</div></div></div> <div><div>05001,0002,000</div><div>Meters</div></div>	



Figure B20. T-1369.



Figure B21. Coastal features digitized from T-1369, overlaid on modern aerial photography (USDA 2005), at same scale as facing T-sheet.

REGISTER No.: T-1392

PUBLISHED: 1875

SURVEYOR: A. W. CHASE, E. ELLICOTT, AND F.A. LAWSON

N

01,0002,0004,0006,0008,000

Feet

05001,0002,000

Meters

1:34,000



Figure B22. T-1392.



Figure B23. Coastal features digitized from T-1392, overlaid on modern aerial photography (USDA 2005), at same scale as facing T-sheet.

REGISTER No.:T-1645

PUBLISHED:1885

SURVEYOR:UNKNOWN, LIKELY A.F. RODGERS

N

01,0002,0004,0006,0008,000

Feet

05001,0002,000

Meters

1:34,000

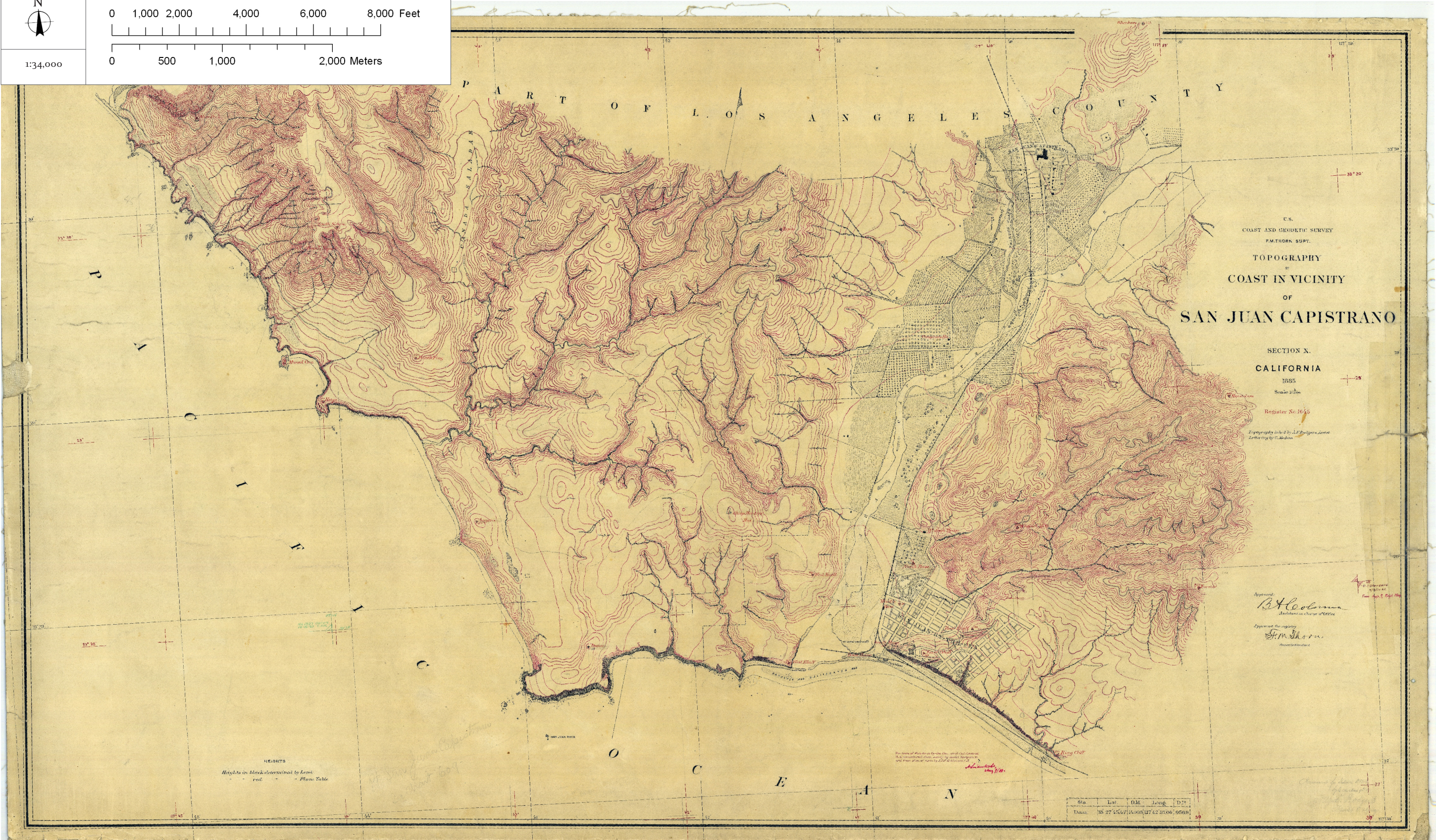



Figure B24. T-1645.



Figure B25. Coastal features digitized from T-1645, overlaid on modern aerial photography (USDA 2005), at same scale as facing T-sheet.

REGISTER No.:	T-2016
PUBLISHED:	1889
SURVEYOR:	A. F. RODGERS AND J. NELSON
N 	0 1,000 2,000 4,000 6,000 8,000 Feet
	0 500 1,000 2,000 Meters
1:34,000	

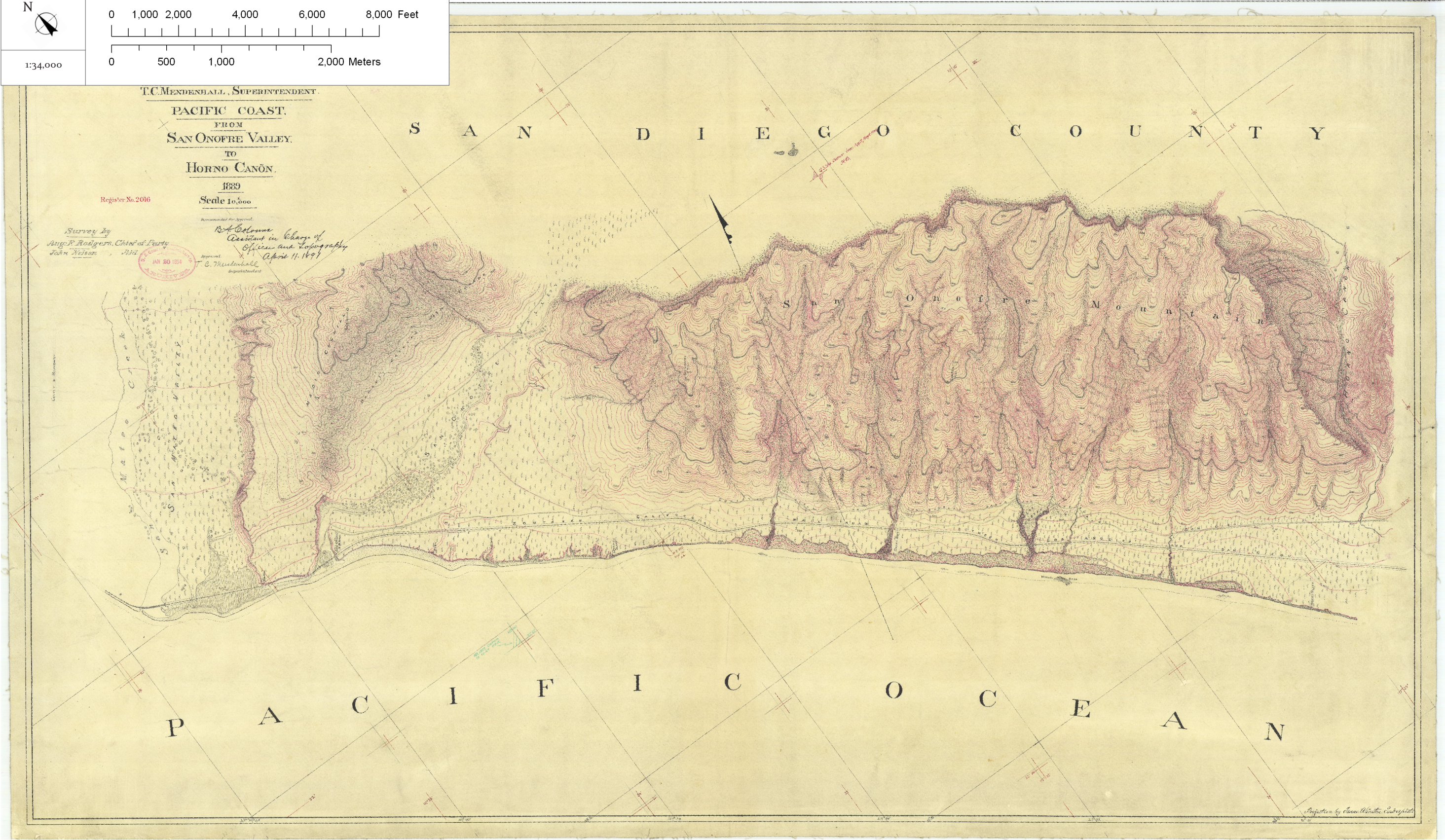


Figure B26. T-2016.



Figure B27. Coastal features digitized from T-2016, overlaid on modern aerial photography (USDA 2005), at same scale as facing T-sheet.

REGISTER No.:	T-2015
PUBLISHED:	1889
SURVEYOR:	A. F. RODGERS AND J. NELSON
<div><div><div>N</div><div></div></div><div><div>01,0002,0004,0006,0008,000</div><div>Feet</div></div><div><div>05001,0002,000</div><div>Meters</div></div></div>	
1:34,000	



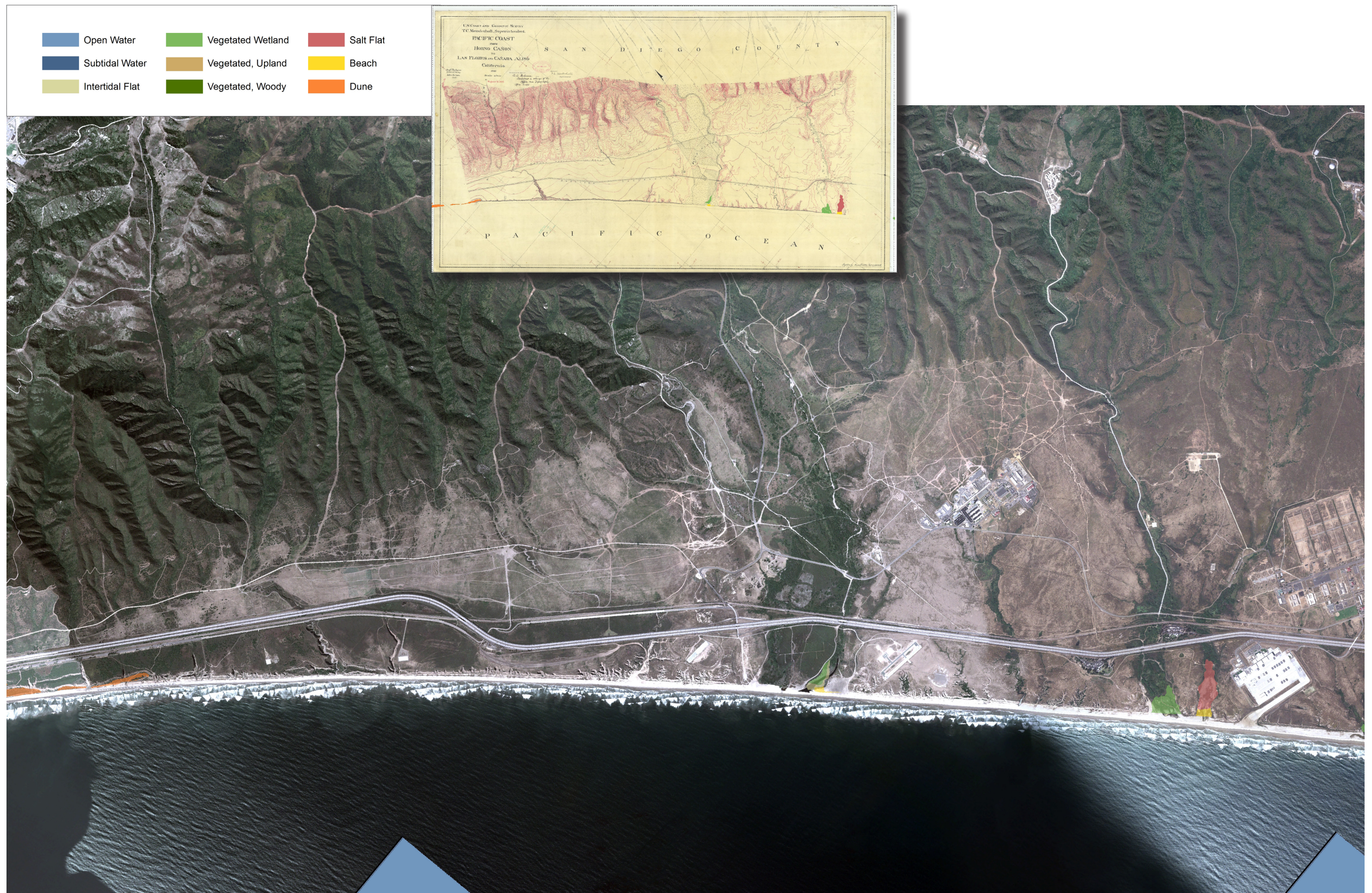


Figure B29. Coastal features digitized from T-2015, overlaid on modern aerial photography (USDA 2005), at same scale as facing T-sheet.

REGISTER No.: T-1900	
PUBLISHED: 1887	
SURVEYOR: A. F. RODGERS	
<div><div>N</div><div></div></div>	<div><div>01,0002,0004,0006,0008,000</div><div>Feet</div></div>
	<div><div>05001,0002,000</div><div>Meters</div></div>



Figure B30. T-1900.

This figure is a composite image. The main part is an aerial photograph of a coastal area in San Diego County, California. Overlaid on this photograph are several colored polygons representing different land cover types. A large green area, representing 'Vegetated Wetland', is located inland from the coast, near a river. A yellow area, representing 'Beach', runs along the coastline. Other smaller areas of blue (Open Water), brown (Vegetated, Upland), and orange (Dune) are also visible. In the top left corner, there is an inset of a historical map titled 'U.S. Coast and Geodetic Survey' and 'SAN DIEGO COUNTY'. This inset map shows the same area with different colors and labels. A legend in the top right corner identifies the colors used in the map: Open Water (blue), Subtidal Water (dark blue), Intertidal Flat (light green), Vegetated Wetland (green), Vegetated, Upland (brown), Vegetated, Woody (dark green), Salt Flat (red), Beach (yellow), and Dune (orange).

Color	Land Cover Type
Blue	Open Water
Dark Blue	Subtidal Water
Light Green	Intertidal Flat
Green	Vegetated Wetland
Brown	Vegetated, Upland
Dark Green	Vegetated, Woody
Red	Salt Flat
Yellow	Beach
Orange	Dune

Figure B31. Coastal features digitized from T-1900, overlaid on modern aerial photography (USDA 2005), at same scale as facing T-sheet.


REGISTER No.:	T-2014
PUBLISHED:	1889
SURVEYOR:	A. F. RODGERS AND J. NELSON
N 	0 1,000 2,000 4,000 6,000 8,000 Feet
	0 500 1,000 2,000 Meters
1:34,000	



Figure B32. T-2014.



Figure B33. Coastal features digitized from T-2014, overlaid on modern aerial photography (USDA 2005), at same scale as facing T-sheet.

REGISTER No.: T-363	
PUBLISHED: 1852	
SURVEYOR: A. M. HARRISON	
<div>N</div> <div></div>	0 1,000 2,000 4,000 6,000 8,000 Feet
	<div></div>
1:34,000	0 500 1,000 2,000 Meters

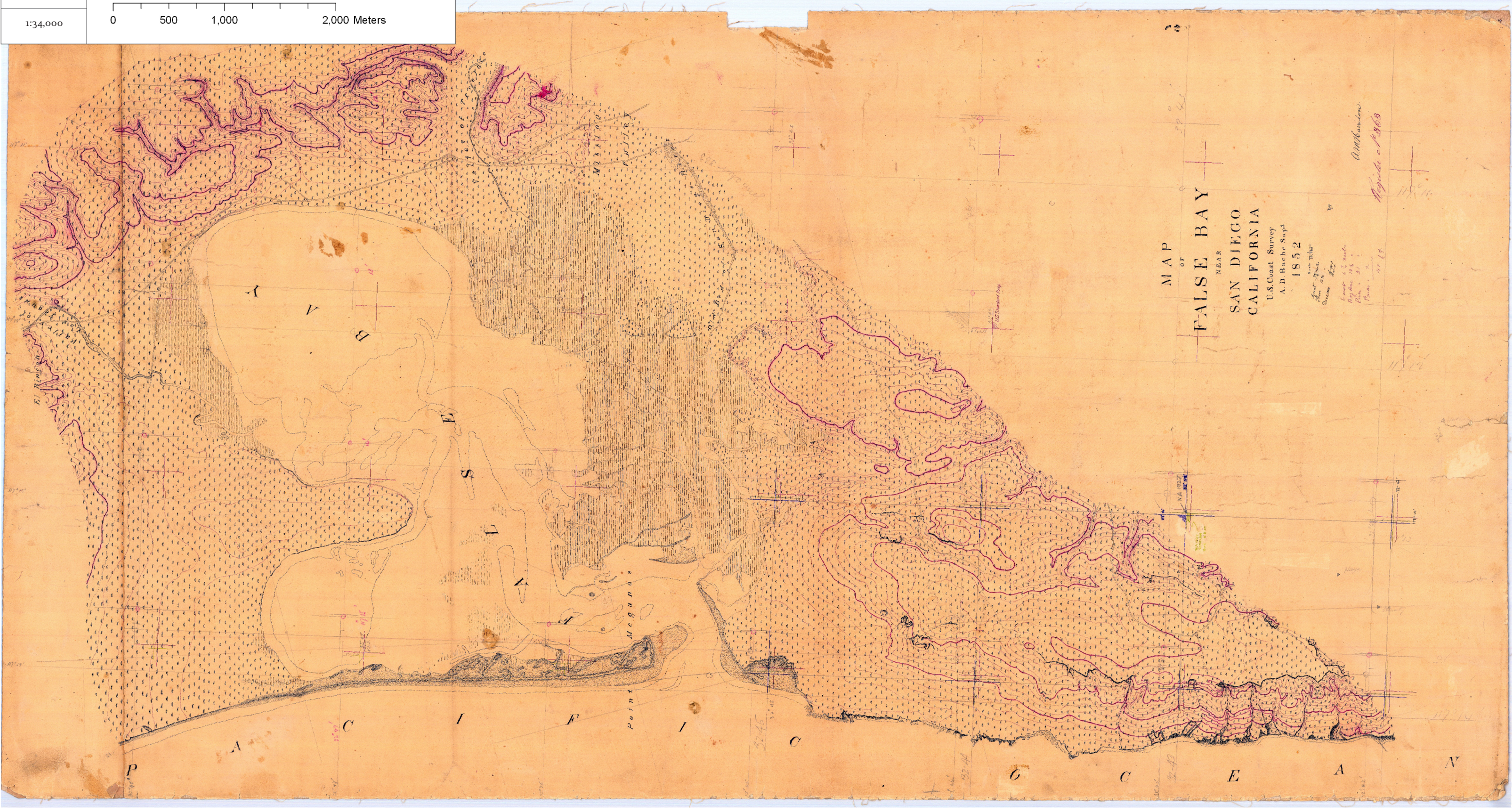


Figure B34. T-363.

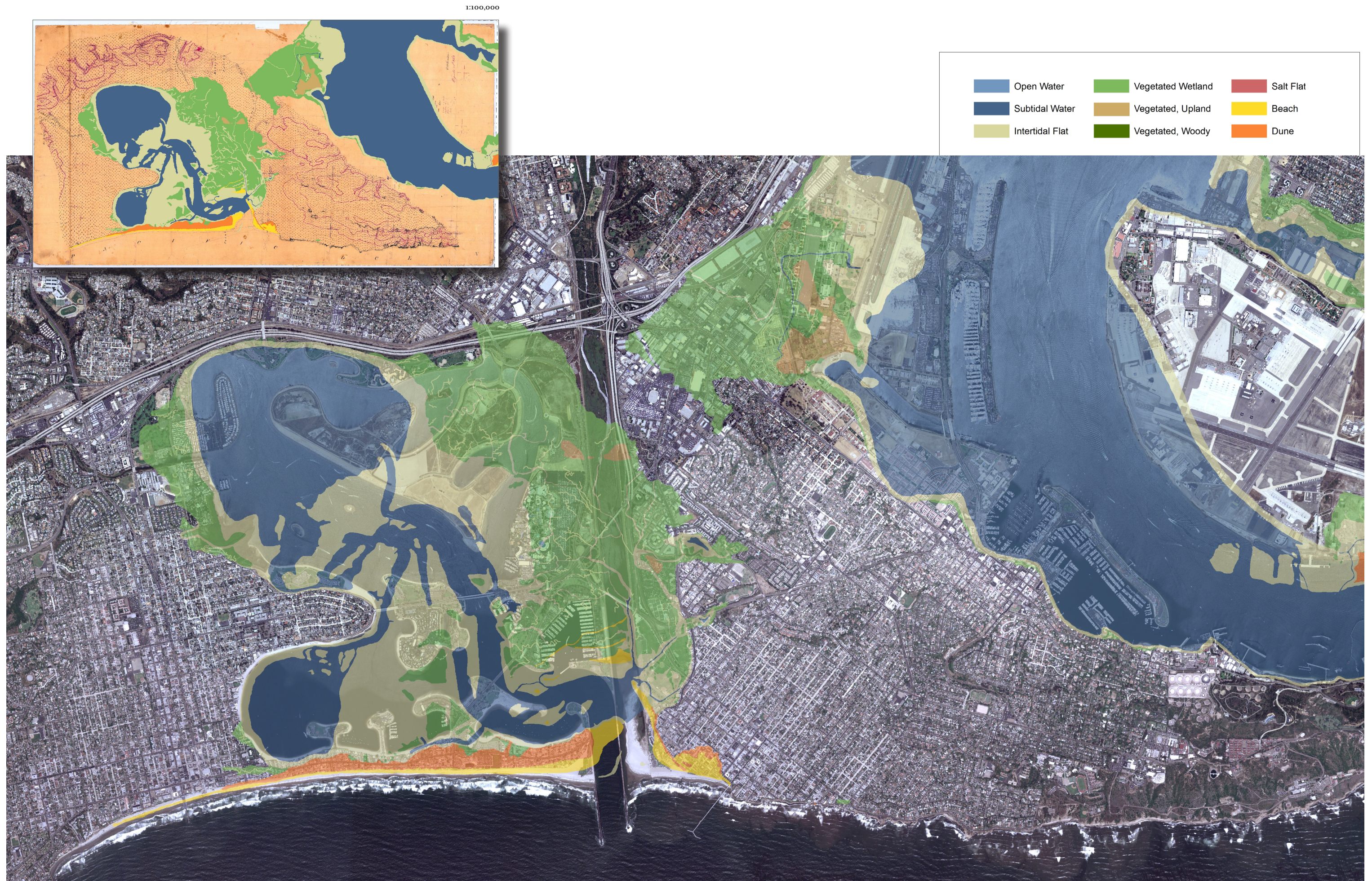


Figure B35. Coastal features digitized from T-363, overlaid on modern aerial photography (USDA 2005), at same scale as facing T-sheet.



Figure B37. Coastal features digitized from T-333, overlaid on modern aerial photography (USDA 2005), at same scale as facing T-sheet.

REGISTER No.: T-364	
PUBLISHED: 1852	
SURVEYOR: A. M. HARRISON	
<div>N </div>	0 1,000 2,000 4,000 6,000 8,000 Feet
	0 500 1,000 2,000 Meters
1:34,000	

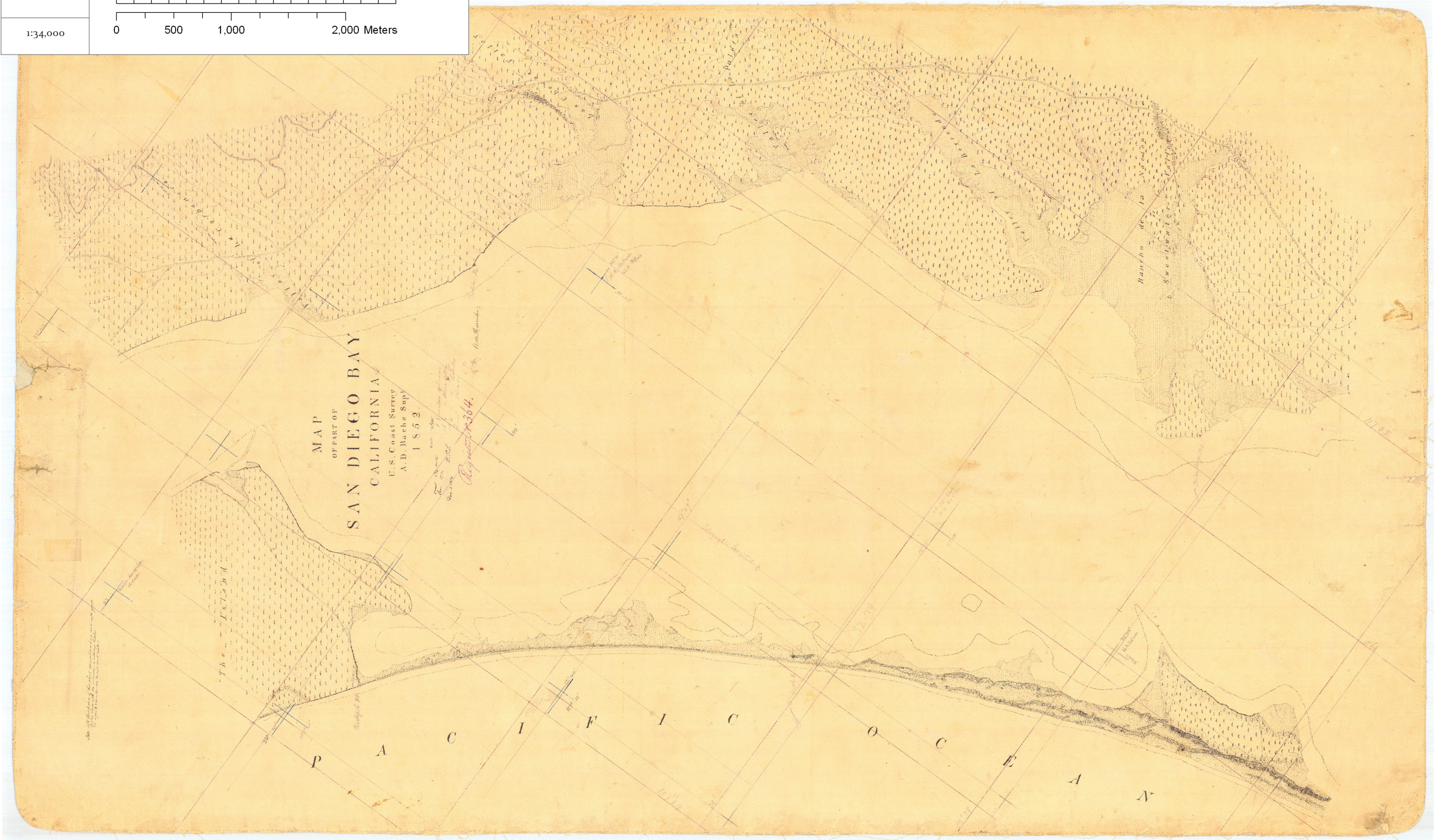


Figure B38. T-364.



Figure B39. Coastal features digitized from T-364, overlaid on modern aerial photography (USDA 2005), at same scale as facing T-sheet.