

# SediMatch

**BRINGING TOGETHER THE wetland habitat restoration + flood control + dredging + watershed management COMMUNITIES to increase reuse of DREDGED SEDIMENT at HABITAT RESTORATION SITES**

## WHAT IS SediMatch?

SediMatch is a collaborative program of the San Francisco Bay Joint Venture (SFBJV), the San Francisco Bay Conservation and Development Commission (BCDC), the San Francisco Estuary Institute (SFEI), the San Francisco Estuary Partnership (SFEI), and others to bring together the wetland habitat restoration, flood control, and dredging communities to discuss challenges and find mutually beneficial strategies to increase reuse of dredged sediment at habitat restoration sites.



Left to right: **Don Edwards National Wildlife Refuge** (photo by Shira Bezalel, SFEI); **dredging in the Port of Oakland area** (courtesy of Creative Commons, Wikipedia); **restoration at Hamilton Air Force Base** (courtesy of Creative Commons, Wikimedia); **Corte Madera tidal flats** (drone imagery by Pete Kaukanen, SFEI)

## SediMatch GOALS INCLUDE

- ▶ create healthy habitats while maximizing beneficial reuse of sediment;
- ▶ develop an easily accessible database where sediment needs can be matched with surplus sediment; and
- ▶ provide opportunities for collaboration.

## HOW WILL THESE GOALS HELP OUR REGION?

*These three goals combined will help our region keep up with sea level rise and create resilient shorelines.* They align with and support maximizing beneficial reuse of dredged sediment as described in the Long Term Management Strategy for Placement of Dredged Material in the San Francisco

Bay Region (LTMS) Program. In addition, the Baylands Ecosystem Habitat Goals Climate Change Update (BEHGU) identifies and recommends using dredged sediment to accelerate the rate and scale of wetland restoration through sediment supply augmentation.



**CONTACT: Ariana Rickard**  
**arickard@sfbayjv.org**

# MATCH SEDIMENT NEEDS WITH THE SediMatch WEB TOOL

Match available sediment with opportunities for beneficial reuse.

**SediMatch Data Entry Request Form**

\* indicates required fields. Use "C" to select multiple options.

Project Name:

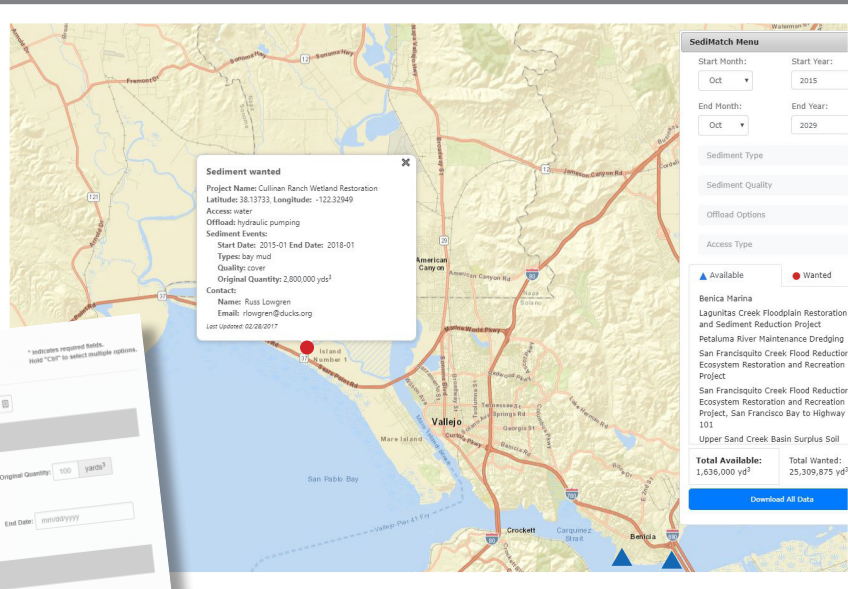
**Sediment Information**

Request Type:  Sediment Type:  Original Quantity:  yards<sup>3</sup>

Sediment Quality:  Start Date:  End Date:

**Primary Contact Information**

Are you the primary contact? ☐



## WHAT'S NEXT?

Develop advanced tracking and filtering

Highlight sediment matches

Link to testing results

Conduct trainings and outreach

Further develop watershed partnerships and data

**Sediment sampling, Regional Monitoring Program**  
(photo by Shira Bezalel, SFEI)



## KEY MILESTONES AT A GLANCE

2011

Joint meeting of BCDC's LTMS and SFBJV to explore "Sediment Issues Facing San Francisco Bay."

2012

USEPA funds **Flood Control 2.0**, an innovative regional project that integrates habitat improvement and flood risk management at Bay interface.

2013

"SediMatch" kick-off meeting between dredgers and project managers hosted by SFBJV and BCDC.

2014

Dredging community joined SFBJV on field trip to Cullinan Ranch and Sears Point. Strong interest in more field trips and collaborative opportunities.

BPC hosted workshop on "Challenges & Opportunities to Dredging and Beneficial Reuse."

2015

BCDC hosted coordination meeting to discuss collaborative opportunities between dredging and restoration projects.

BPC hosted workshop on "Dredging and Beneficial Reuse."

Kick-off meeting for SediMatch Web Tool hosted by SFBJV, SFEI, BCDC and SFEP.

Release of Baylands Ecosystem Habitat Goals (BEHGU) Science Update.

Beta version of SediMatch Web Tool presented to LTMS Management Committee.

2016

SediMatch Database Task Group finalize information required for making a match.

USEPA funds **Healthy Watersheds, Resilient Baylands** and Phase 2 of SediMatch Web Tool.

2017

USEPA funds **Pre-paving for the Storm** and expanding SediMatch Web Tool to better accommodate upland soils.

Released SediMatch Web Tool v1.0

2018

BPC continues to host **Annual Beneficial Reuse Workshops**

Tool enhancements funded by **Healthy Watersheds, Resilient Baylands** grant.

2019

Tool enhancements

- Included upland soils
- Modified forms to manage multi-year events



**CONTACT: Ariana Rickard**  
arickard@sfbayjv.org

**USEFUL/RELATED WEBSITES:**

<http://www.sfei.org/flood-control-20>

<http://www.sfei.org/projects/sedimatch-web-tool>