

# MAKING GREEN INFRASTRUCTURE WORK IN THE BAY AREA

How the San Francisco Estuary Institute (SFEI) Supports Local Leaders

*Green Infrastructure is a critical focus area for the San Francisco Estuary Institute (SFEI),*

an independent science organization that provides data and tools to support sound ecosystem management decisions. Through innovative science and our Green Plan-It tool, we tackle hard questions regarding Green Infrastructure performance, planning, and management, such as:

- How does Green Infrastructure perform in reducing runoff and urban pollutants?
- Where can Green Infrastructure be implemented most cost effectively in our urban landscape? How much will it cost and what benefits can we get for our investment?
- How do we track green features that are implemented over time?
- How do we account for the multi-benefits of Green Infrastructure?

## **SFEI'S GREEN INFRASTRUCTURE RESEARCH PROJECTS**

With state and EPA funding, SFEI is working on field studies and planning projects with many cities and counties across the region. We organize science forums and stakeholder meetings to build consensus about research needs and management and policy direction.

## **GREEN INFRASTRUCTURE RESEARCH SITES**



### **STRATEGIC PLACEMENT AND WATERSHED MASTER PLANNING**

San Jose, San Mateo, Sunnyvale, Oakland, and Richmond

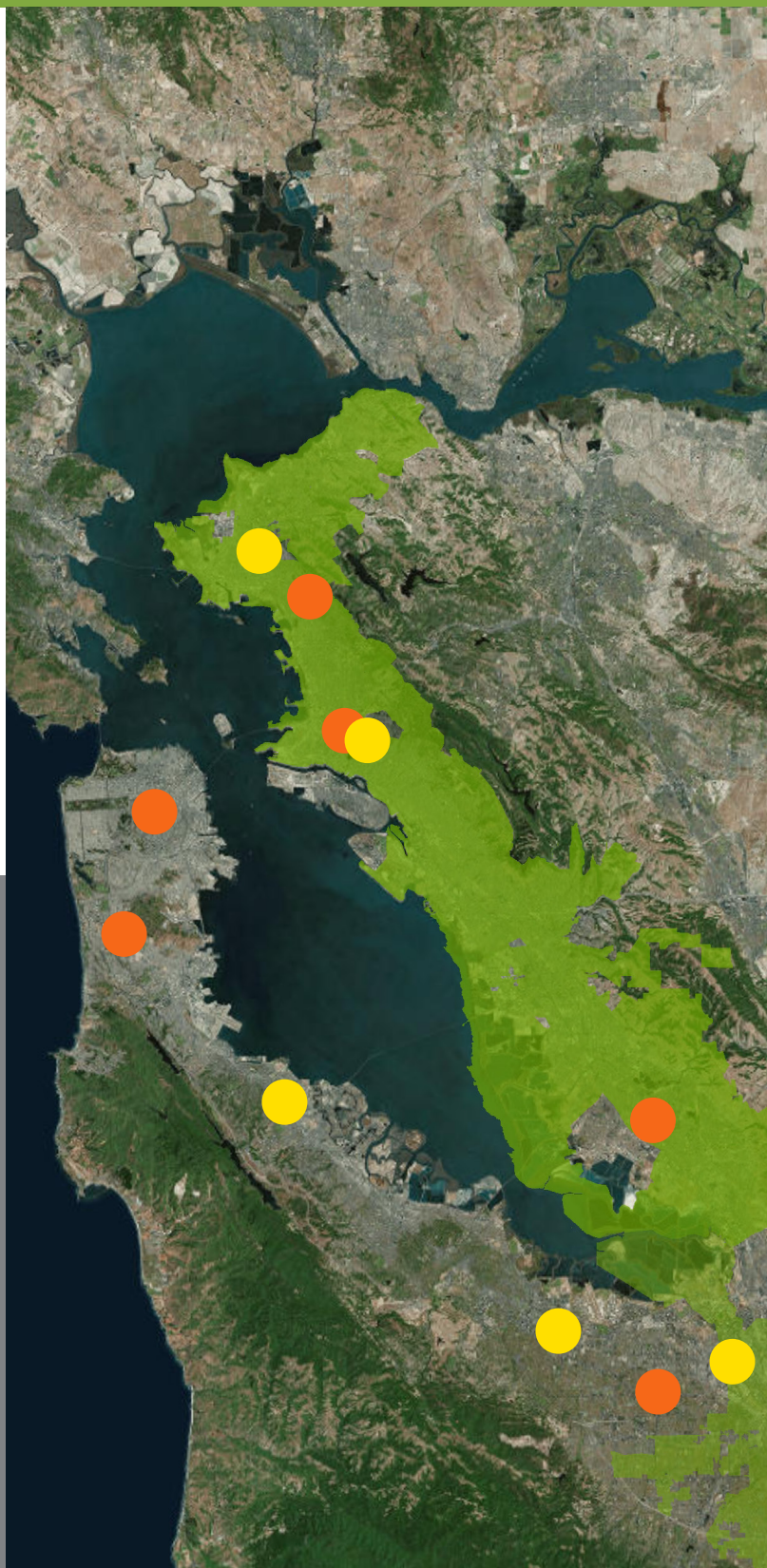


### **PERFORMANCE MONITORING**

Daly City, El Cerrito, San Francisco, Fremont, Campbell and Oakland



### **SITE IDENTIFICATION FOR THE EAST BAY CORRIDOR INITIATIVE**



For more information, visit [greenplanit.sfei.org](http://greenplanit.sfei.org)

# SFEI

SAN FRANCISCO ESTUARY INSTITUTE  
[www.sfei.org](http://www.sfei.org)



**GreenPlan-IT** is a versatile open-source toolset designed by the San Francisco Estuary Institute (SFEI), to assist municipal managers with strategic placement of Green Infrastructure and watershed master planning. The toolset helps municipalities to meet their stormwater permit requirements and other programmatic needs. It also facilitates compliance and effectiveness reporting through innovative data management and modeling techniques.

The GreenPlan-IT tool allows municipalities to evaluate multiple management alternatives using green infrastructure to address stormwater issues in urban watersheds.

Quantitatively-derived watershed master plans can be developed with GreenPlan-IT to guide future green infrastructure implementation to improve water quality in the San Francisco Bay and its tributary watersheds.

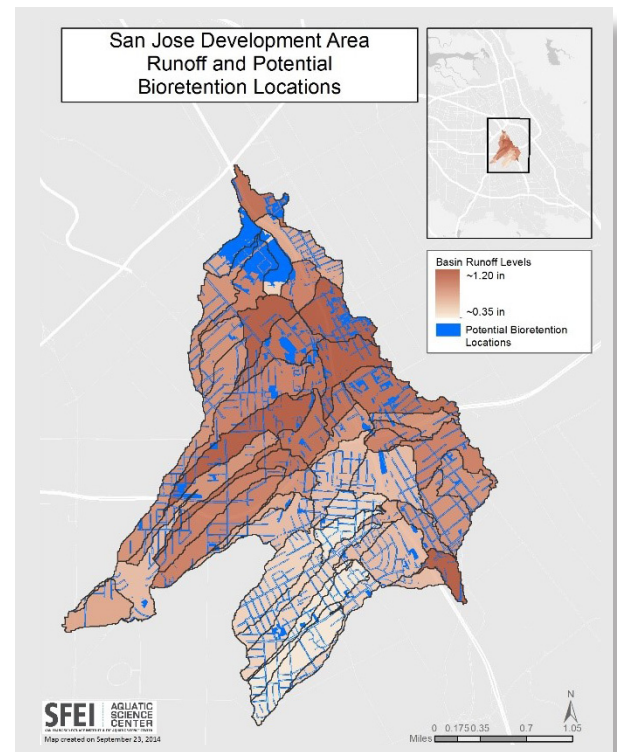
*For more information, visit [greenplanit.sfei.org](http://greenplanit.sfei.org)*

## Good Science for Green Policy

SFEI is involved in regional and statewide research efforts to provide sustainable stormwater management solutions for urbanized and developing areas. We use field monitoring and modeling tools to derive a better understanding of how green infrastructure functions in our semi-arid climate and provide scientific foundation for Green Infrastructure policy and management.

For more information about SFEI's Green Infrastructure science, contact: Lester McKee ([lester@sfei.org](mailto:lester@sfei.org)), Jing Wu ([Jing@sfei.org](mailto:Jing@sfei.org)), Tony Hale ([tony@sfei.org](mailto:tony@sfei.org)), or Pete Kauhanen ([petek@sfei.org](mailto:petek@sfei.org)).

# GreenPlanIT



**SFEI**

SAN FRANCISCO ESTUARY INSTITUTE  
[www.sfei.org](http://www.sfei.org)