

# WETLAND AND RIPARIAN BASE MAP

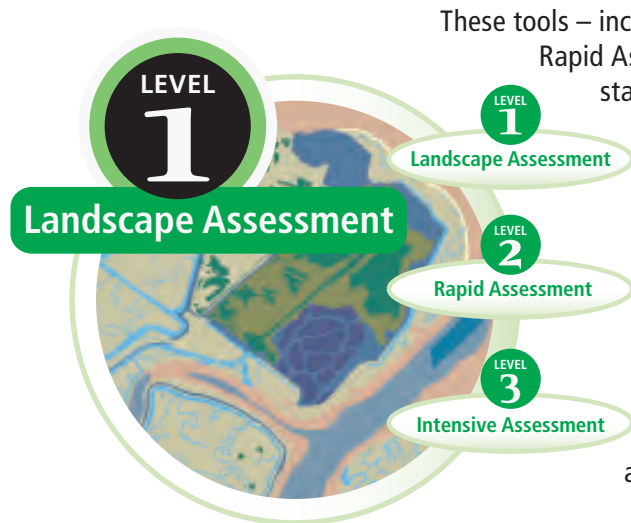
**BAY AREA**

WETLANDS SCIENCE PROGRAM  
of the San Francisco Estuary Institute  
May 2009 • Contribution No. 569

**The San Francisco Estuary Institute** is creating a new base map of aquatic habitat for the nine counties of the Bay Area as part of the Wetlands Regional Monitoring Program (WRMP).

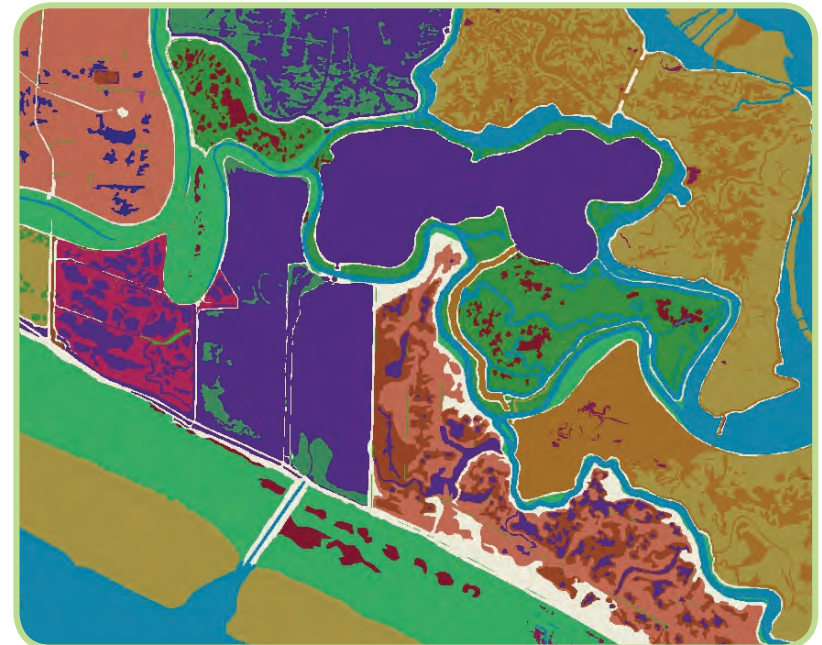
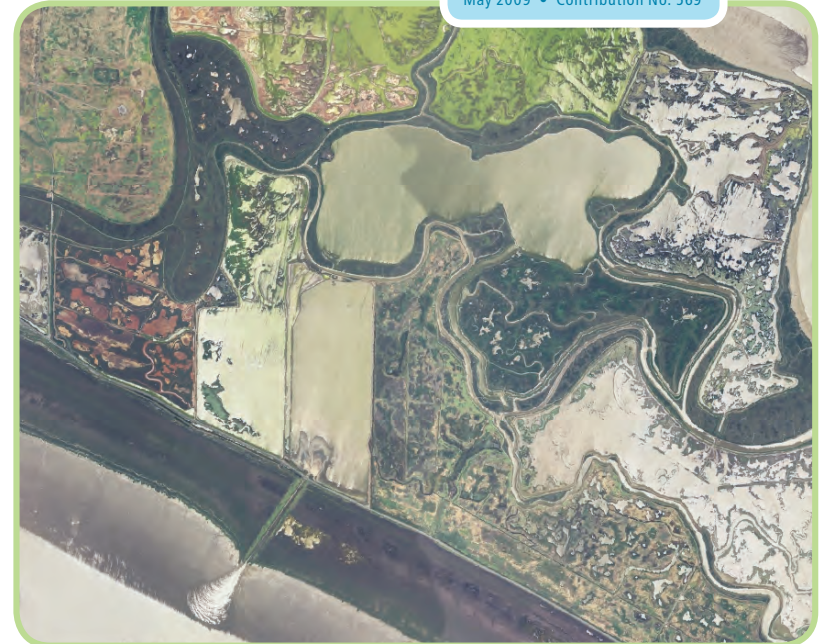
The digital map includes accurate representations of tidal flats, tidal marsh, streams, ditches, rivers, lakes, ponds, seasonal and perennial wetlands, and riparian areas. This map constitutes the Bay Area baseline dataset for tracking changes in the extent and condition of aquatic habitat—as affected by projects, land use and climate change. It will replace the EcoAtlas Modern Baylands Map having undergone extensive quality control for compliance to standards.

**This new base map** is part of a larger initiative to extend proven, cost-effective wetlands assessment tools across the baylands and throughout the watersheds of the Bay Area. There are three types of tools in the wetlands assessment tool kit: Level 1 tools are landscape-level assessments using map inventories and analysis of landscape features; Level 2 tools are standardized, yet rapid, qualitative assessments of ambient conditions requiring only a moderate cost; Level 3 tools are intensive quantitative measurements of conditions, stressors, or cause-and-effect relationships and are more costly.



These tools – including Wetland Tracker \* and the California Rapid Assessment Method (CRAM)\* provide standardized, efficient ways to collect and synthesize data for land-use planning.

These data can be used to assess changes in the condition and extent of aquatic habitats for projects, watersheds, and the region as a whole. The assessment tool kit will help environmental scientists, managers and the concerned public identify opportunities for ecological restoration, understand natural processes and address the challenges of climate change.



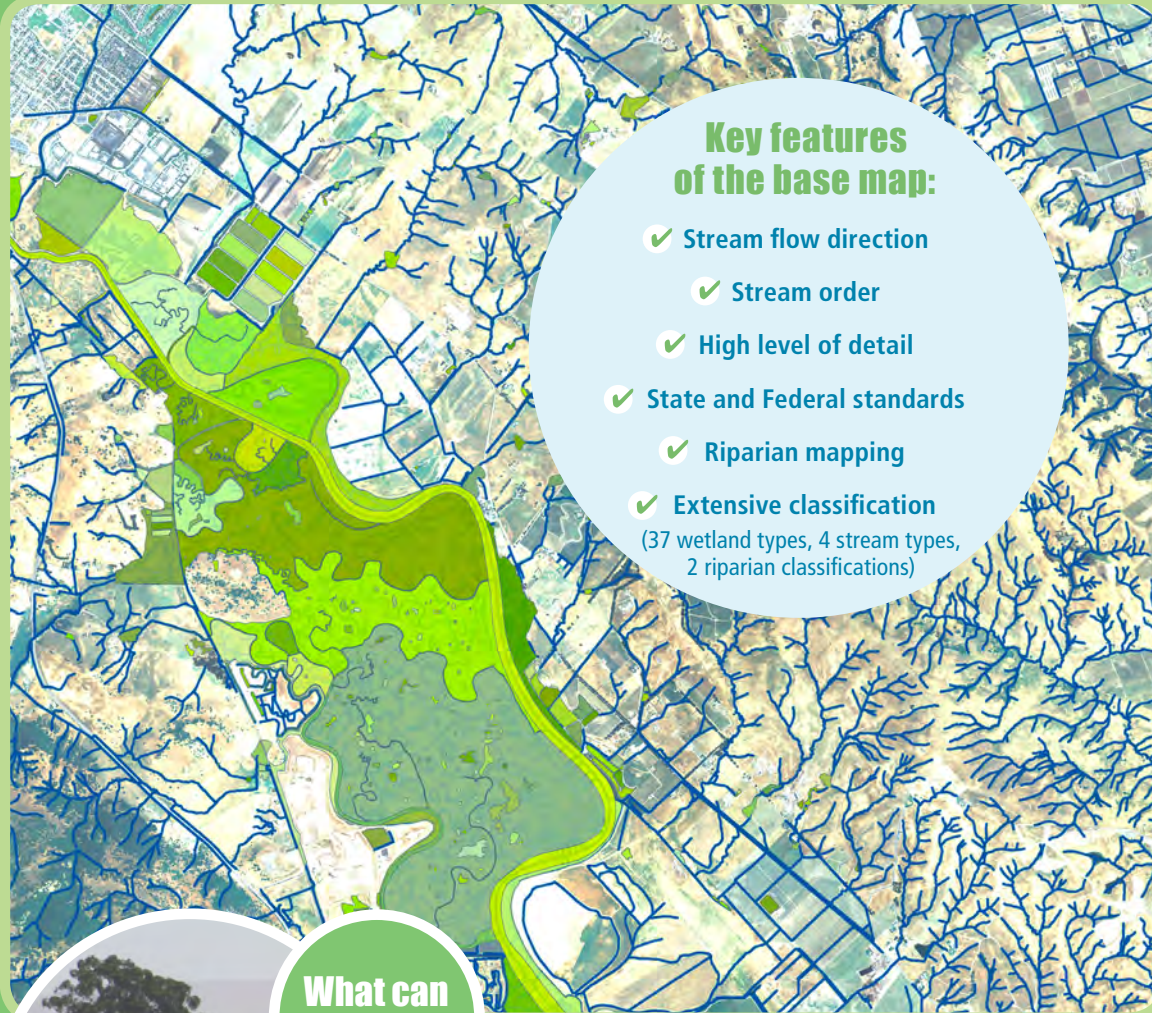
\* Factsheets for CRAM and Wetland Tracker are available through [www.cramwetlands.org](http://www.cramwetlands.org) and [www.wetlandtracker.org](http://www.wetlandtracker.org)

[www.wrmp.org](http://www.wrmp.org)

CONTINUED >



# WETLAND AND RIPARIAN BASE MAP



## What can you do?



SFEI welcomes review and feedback on the base map from local residents, development interests, government agencies, and other interested parties. The updated map will be made available as a base layer on Wetland Tracker at [www.wetlandtracker.org](http://www.wetlandtracker.org). Wetland Tracker is an interactive mapping tool that displays information about aquatic habitats, as well as mitigation and restoration projects in California. If interested in discussing this effort, please contact [wetlands@sfei.org](mailto:wetlands@sfei.org).

## Comparison of aquatic habitat maps in southeastern Sonoma County

The WRMP base map is designed to assure that it is useful to local agencies and watershed stewards while being consistent with state and federal standards. Note the high density of wetland, riparian and stream network features included in new maps. The protocols for mapping are posted to the protocols section of [www.wrmp.org](http://www.wrmp.org).

### WRMP WETLANDS REGIONAL MONITORING PROGRAM

**MAPPING SCALE:**  
Non-tidal = 1:5,000  
Tidal = 1:2,500

**HABITATS MAPPED:**  
All aquatic features

0 0.4 0.8 1.6 2.4 3.2 Miles

### National Hydrographic Dataset

**MAPPING SCALE:**  
1:24,000

**HABITATS MAPPED:**  
Aquatic features except wetlands

0 0.4 0.8 1.6 2.4 3.2 Miles

### National Wetland Inventory

**VARIABLE MAPPING SCALE:**  
~1:8,000

**HABITATS MAPPED:**  
Streams and other wetlands

0 0.4 0.8 1.6 2.4 3.2 Miles