

# DARI

# Delta Aquatic Resources Inventory

## What is DARI?

DARI is the Delta Aquatic Resources Inventory of surface waters, wetlands and other aquatic resources in the Sacramento-San Joaquin Delta (Delta). The goal of the DARI project is to develop a geospatial inventory of aquatic resources that will be used as a common base map for the Delta. A similar mapping approach used to create the California Aquatic Resource Inventory (CARI; [www.sfei.org/cari](http://www.sfei.org/cari)) will be applied to provide a map of the aquatic resources and their associated attributes. The final map will be incorporated into CARI and made publicly available through EcoAtlas ([ecoatlas.org](http://ecoatlas.org)) and similar platforms.

## Project tasks include:

- ▶ developing a geospatial inventory of aquatic resources for the Delta,
- ▶ establishing a standard regional typology for mapping wetlands and riparian areas in the Delta,
- ▶ training local GIS staff to develop the geospatial dataset,
- ▶ building mapping expertise,
- ▶ and integrating DARI into CARI and making the map publicly available on EcoAtlas.

## Why is DARI needed?

DARI will provide a standard regional approach to wetland classification and mapping to support wetland restoration planning, tracking, and reporting. It will facilitate implementation of the California Wetland and Riparian Areas Monitoring Plan (WRAMP) in the Delta.

## How will DARI be developed?

The procedures to develop DARI will include evaluating existing data and using geo-rectified imagery, remote sensing data, and other necessary data to develop a comprehensive map of the Delta. The draft DARI procedures and wetland classification system developed previously for a pilot study will be updated to guide this project and map those areas of the Delta not yet inventoried. Since a goal of this project is to encourage ongoing stewardship, protocols will be established for submitting new or revised data using the CARI Editor Tool ([www.ecoatlas.org/about/#cari-editor](http://www.ecoatlas.org/about/#cari-editor)) and incorporating these new data to update the DARI base map in the future.

Cosumnes River Preserve. (photo courtesy of BLM, by John Ciccarelli)



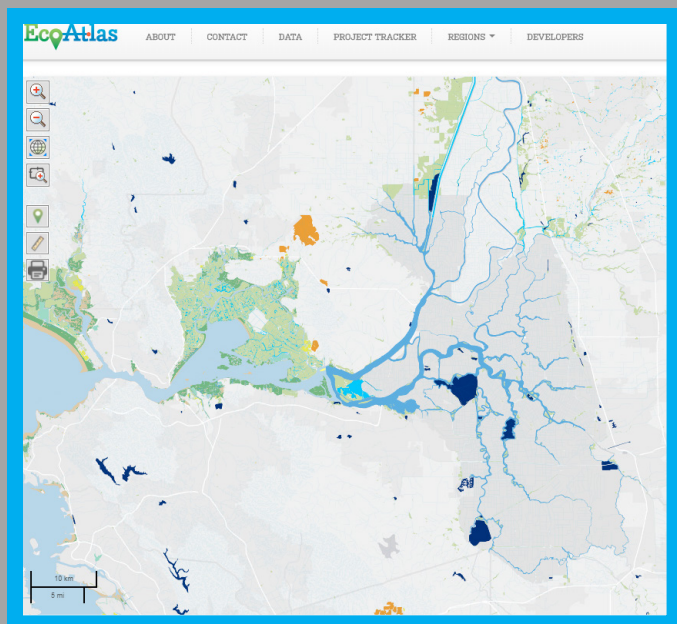


Eastside Bypass on the San Joaquin River, March 2017. (photo courtesy of USFWS, by Steve Martarano)

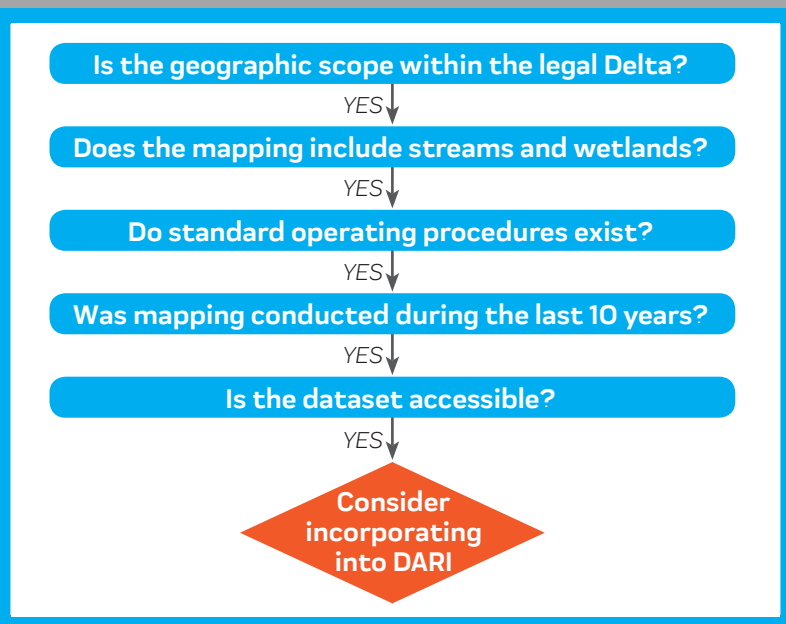
## When and what are the benefits of DARI?

Once completed in 2020, the common base map for the Delta will provide several benefits, including:

- ▶ **Establish a baseline** of existing aquatic resources in the Delta
- ▶ **Inform prioritization** of management actions and evaluate the effectiveness of projects
- ▶ **Increase the ability to assess and track the amount and quality of wetlands** in the Delta to support compliance monitoring and assessment of wetlands projects
- ▶ **Increase the capacity** for assessing regional and statewide net change in the abundance, diversity, and condition of wetlands as affected by land use
- ▶ **Facilitate wetland monitoring** in the Delta region to assess the status and trends in its wetland ecosystems
- ▶ **Encourage ongoing stewardship** and updating of DARI with protocols and online tools



Map of aquatic resources in the Delta will be incorporated into EcoAtlas.



Decision schematic used to coordinate with other mapping projects to avoid duplication of effort.

Project funding and oversight provided by **USEPA** and the **California Wetland Monitoring Workgroup (CWMW)**.

**CONTACT:** Cristina Grosso • [cristina@sfei.org](mailto:cristina@sfei.org)  
and Thomas Jabusch • [thomas.jabusch@deltaconservancy.ca.gov](mailto:thomas.jabusch@deltaconservancy.ca.gov)

