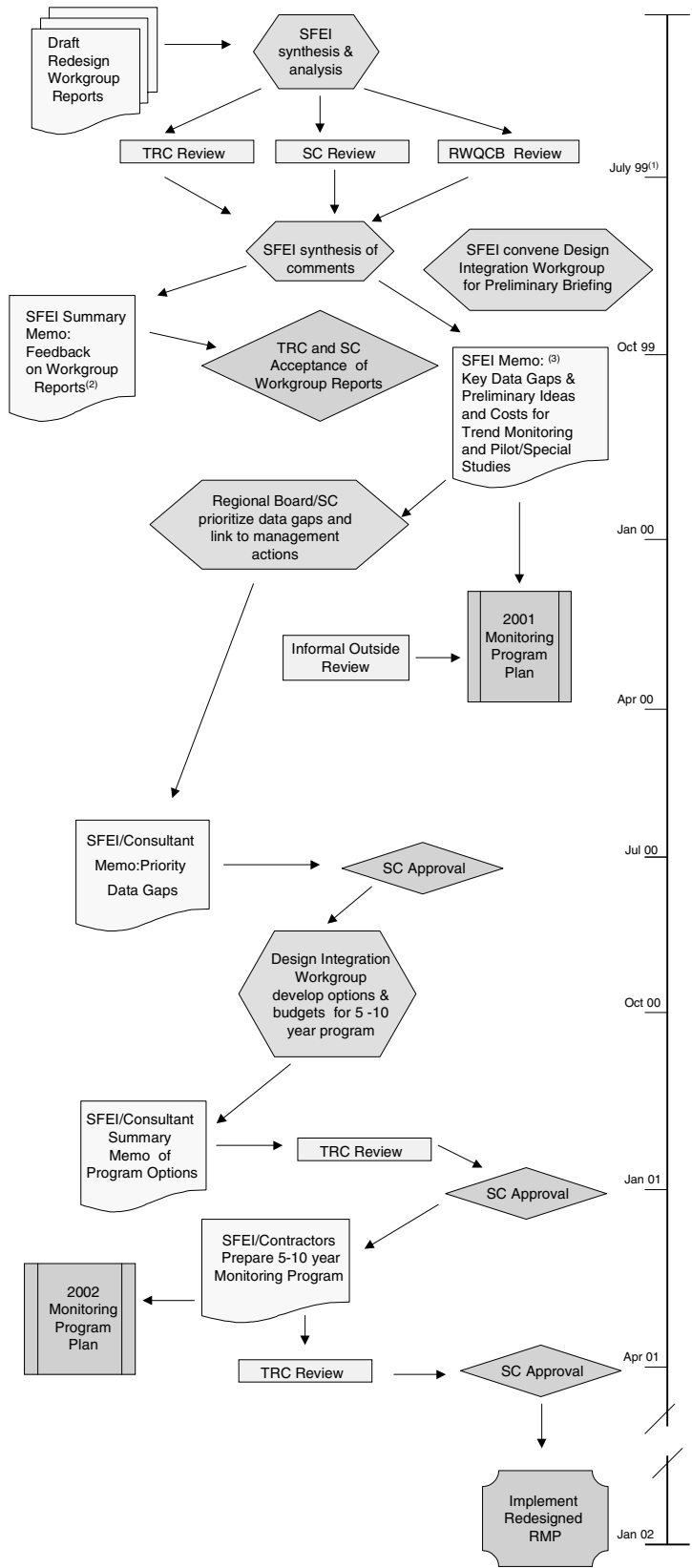


Process and Products for RMP Redesign Implementation by January 2002



NOTES:

- 1). The schedule is structured around the quarterly meeting cycle of the Steering and TRC committees. Information will be provided in agenda packages to facilitate discussion and decision-making at these meetings.
- 2). Workgroup reports, comment summaries, and SFEI staff analysis will be compiled for publication in the RMP Annual Report.
- 3). RWQCB staff will provide direction as to the content of the memo. Based on SFEI staff work, parallel processes involving Steering Committee and RWQCB staff will commence to prioritize data gaps and link them to management actions. These processes may include workshops facilitated by SFEI staff or their consultants.