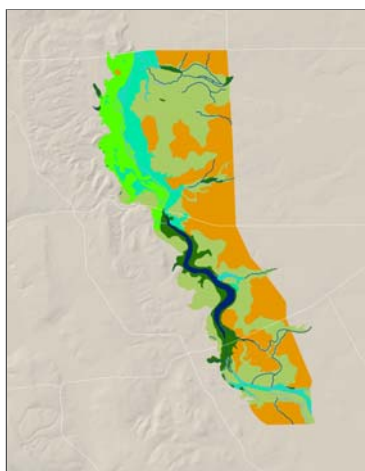


## Historical\_Habitats\_\_SFEI\_2017

File Geodatabase Feature Class



### Tags

Historical ecology, San Francisco Bay, Laguna de Santa Rosa, Lake Jonive, Sonoma County, Santa Rosa, Sebastopol, Forestville, Windsor, Wilson Grove Formation, Sonoma Mountains, Mayacamas Mountains, Santa Rosa Plain, Russian River, Guerneville Road, creek, channel, channel alignment, wetland, tributary, marsh, alluvial fan, historical condition, sediment, flood, habitat, pre Euro-American

### Summary

These datasets depict the historical habitat types and channel alignment of lower Laguna de Santa Rosa and surrounding tributaries, representing average dry-season conditions prior to substantial Euro-American modification (~late 1700s-late 1800s). The data were also used to compare historical and current channel lengths as well as wetland and riparian extents.

The study area boundary encompasses over 3000 acres east of Sebastopol. It extends from the Guerneville road crossing of Laguna de Santa Rosa to the south, to just beyond the confluence of Windmill Creek with Laguna de Santa Rosa, .

These datasets accompany the descriptive report available at <http://www.sfei.org/projects/LagunadeSantaRosaHE>

### Description

This geodatabase contains four feature classes representing historical and current landscape within the study area including:

1. the historical channel alignment, derived from historical and contemporary sources
2. historical habitats, derived from historical and contemporary sources
3. current channel alignment, derived from the Northern California Aquatic Resources inventory (NCARI) (SFEI 2014)
4. current wetland and riparian extents, derived from NCARI (SFEI 2014), and a draft version of the Sonoma County Vegetation Map (Tukman GeoSpatial 2016)

Extensive supporting information, including research methods, examples of key sources, and bibliographic references can be found in the descriptive report, available at <http://www.sfei.org/projects/LagunadeSantaRosaHE>

A geographic information system was used to collect, catalog, and synthesize the spatial components of the study area. Historical maps and aerial photography were georeferenced, allowing us to compare historical layers to each other and to contemporary aerial photography and maps. Additionally, the georeferenced maps and photos were used as a means to geographically locate information gathered from textual data.

Channels were mapped as line features. Wetland and habitat mapping were mapped as polygons.

--

#### Attribute table fields for historical datasets:

Habitat\_Type: Historical Habitat or Channel Type

Interp\_Cert: coded H (high): feature definitely present; M (medium): feature probably present; or L (low): feature possibly present.

Shape\_Cert: coded H (high): mapped feature expected to be 90%-110% of actual feature size; M (medium): expected to be 50%-200% of actual size; L (low): expected to be 25%-400% of actual size.

Loc\_Cert: H (high): expected maximum horizontal displacement less than 50 m; M (medium): less than 150 m; L (low): less than 500 m.

Notes: Additional documentation about the feature.

S\_Digitize: Source data used to digitize the channel segment.

S\_Interp1: Interpretation Source 1 - Primary data used to interpret the mapped channel segment if other than the digitizing source.

S\_Interp2: Interpretation Source 2 - Data used to support mapping of the channel segment – additional documentation/evidence other than Interpretation Source 1.

Name: The historical and/or contemporary name of the feature.

Source\_Quotes: Historical textual quotes supporting the mapped channel alignment.

Notes2: Additional documentation about the channel segment.

SHAPE\_Length: Length of the channel segment in meters.

SHAPE\_Area: [polygons only] Area of the feature in square meters

#### Attribute table fields for contemporary datasets:

NCARI was the primary dataset used for top map contemporary conditions. The entire NCARI dataset can be accessed at <http://www.sfei.org/data/ncari-santa-rosa-plain-wramp-gis-data/>. A draft version of Tukman GeoSpatial's Sonoma County Vegetation map was used to map additional areas of riparian vegetation within the study area. Updated drafts of the Sonoma Vegetation Map are available at <http://sonomavegmap.org>

Wetland\_Type: Channel of wetland Type as mapped in NCARI

Source: The original source(s) from which the feature was digitized

Notes: Additional documentation about the feature.

Name: The name of the feature.

Origin: Whether the feature originated from NCARI or the draft Sonoma County Vegetation Layer (Tukman GeoSpatial 2016 DRAFT)

FINE\_SCALE\_EDITED: Vegetation classification used in the draft Sonoma County Vegetation Layer (Tukman GeoSpatial 2016 DRAFT)

CROSSWALK\_3: reclassification of the Wetland\_Type (NCARI) or FINE\_SCALE\_EDITED (Tukman GeoSpatial DRAFT) used for historical-contemporary areal change analysis

SHAPE\_Length: Length of the channel segment in meters.

SHAPE\_Area: [polygons only] Area of the feature in square meters

---

#### References:

For full bibliographic information consult the accompanying report (Baumgarten et al. 2014). Additional references cited in the geospatial data are provided below. NAIP 2010 and LagunaFoundation are citations

from NCARI mapping (SFEI 2013).

Bell and Heymans. 1888. Map of Sonoma County, Cal., showing boundary lines of county and townships, railroads and public roads, cities, towns, &c, &c. Supplement to 'Sonoma County and Russian River Valley illustrated.' *Courtesy of Sonoma County History and Genealogy Library.*

Bowers ABH-T. 1867. *Map of Sonoma County.* *Courtesy of Sonoma State University North Bay Regional & Special Collections.*

Davis P. 1879. Plat of the Laguna Drainage District [Recorder map no. 07m14]. *Courtesy of Sonoma County Recorder.*

Dyer EH. 1861. Plat of the Llano de Santa Rosa, finally confirmed to Joaquin Carillo. Surveyed under instructions from the U.S. Surveyor General. *Courtesy of Bureau of Land Management.*

Eliason WA. 1861a. Sonoma County, CA. Official surveys vol. 1, 1850-1873. Survey No. 14. M.C. Johnson. Frac. in Sec 1. T6NR9W [page 238]. *Courtesy of Sonoma County Recorder.*

Eliason WA. 1861b. Sonoma County, CA. Official surveys vol. 1, 1850-1873. Survey No. 41. W.H. Smith. E 1/2 SW 1/4 + W 1/2 SE 1/4 + SE 1/4 SE 1/4 Sec 22. T7NR9W [page 265]. *Courtesy of Sonoma County Recorder.*

Eliason WA. 1861c. Sonoma County, CA. Official surveys vol. 1, 1850-1873. Survey No. 64. Jas P. Clark. NW 1/4 Sec. 25 T7NR9W [page 287]. *Courtesy of Sonoma County Recorder.*

Gray N. 1857a. *Field notes of the final survey of the Rancho los Molinos, John B.R. Cooper, confirmee.* Book C-25/G3. U.S. Department of the Interior, Bureau of Land Management. *Courtesy of Bureau of Land Management.*

Gray N. 1857b. Plat of the Molinos Rancho finally confirmed to John B.R. Cooper. U.S. Surveyor General's Office. San Francisco, CA. *Courtesy of Bureau of Land Management.*

Gray N. ca. 1860. Sonoma County, CA. Official surveys vol. 1, 1850-1873. Survey No. 120. [page 343]. *Courtesy of Sonoma County Recorder.*

Gray N. 1865. *[Survey in Township 7 North Range 9 West Section 15 for A.J. Peterson.] August 29.* Official Surveys Vol. 1, 1850-1873, p. 347. Sonoma County Surveyor.

LSRF (Laguna de Santa Rosa Foundation). 2004. Tributaries [GIS dataset showing tributaries of the Laguna de Santa Rosa watershed]. *Courtesy of Laguna de Santa Rosa Foundation.*

McIntire & Lewis. 1908. Official map of the County of Sonoma, 1908, California, compiled and drawn from the official records. *Courtesy of Sonoma County History and Genealogy Library.*

Millington S. 1865. *Transcript of the field notes of the survey of the subdivision lines Township 7 North Range 9 West, Mount Diablo Meridian, State of California.* Book 182-9. U.S. Department of the Interior, Bureau of Land Management. *Courtesy of Bureau of Land Management.*

Millington S. 1866. *Transcript of the field notes of the survey of the subdivision lines Township 6 North Range 9 West, Mount Diablo Meridian, State of California.* Book 182-6. U.S. Department of the Interior, Bureau of Land Management. *Courtesy of Bureau of Land Management.*

Mueller CE. 1921. Jewell's subdivision of the Bisordi Bro's Allendale Ranch, being portions of sections 26 and 27 of Township 7 North, Range 9 West M.D.M., Sonoma County, California [Recorder map no. 40m06]. *Courtesy of Sonoma County Recorder.*

Mueller CE. 1922. Map of Sebastopol, Sonoma Co., Calif. Compiled from Official Map dated 1904 and from later additions to the Town. Also from my own notes and surveyes [sic]. *Courtesy of Bob Curtis Collection.*

NAIP (National Agriculture Imagery Program). 2012. [Natural color aerial photos of Sonoma County]. Ground resolution: 1m. USDA-FSA Aerial Photography Field Office, Salt Lake City, UT.

NRCS (Natural Resources Conservation Service). 2011. Soil survey geographic (SSURGO) database for Sonoma County, California, ca097. U.S. Department of Agriculture, Natural Resources Conservation Service.

Petaluma and Santa Rosa Railway Company. 1907. [Railway Commission Map 'A'] Map of final location Petaluma & Santa Rosa Ry. Co., Petaluma to Forestville, Sebastopol to Santa Rosa, Sonoma Co., Cal. Sheet 26 of 33. *Courtesy of Sonoma County History and Genealogy Library.*

Reynolds & Proctor. 1898a. T. 6 N., R. 9 W. in Illustrated atlas of Sonoma County, California. Compiled and published from personal examinations, official records and actual surveys. Santa Rosa, CA: Reynolds & Proctor. *Courtesy of David Rumsey Map Collection.*

Reynolds & Proctor. 1898b. T. 7 N., R. 9 W. in Illustrated atlas of Sonoma County, California. Compiled and

published from personal examinations, official records and actual surveys. Santa Rosa, CA: Reynolds & Proctor. *Courtesy of David Rumsey Map Collection.*

SFEI-ASC (San Francisco Estuary Institute-Aquatic Science Center). 2014. NCARI: North coast aquatic resource inventory mapping. <http://www.sfei.org/data/ncari-santa-rosa-plain-wramp-gis-data>.

Sonoma County Surveyor. 1861. Sonoma County, CA. Official surveys vol. 1, 1850-1873. Survey No. 12. Levi Johnson. Frac. SE 1/4 + S 1/2 SW 1/4 Sec. 1 T6NR9W [page 236]. *Courtesy of Sonoma County Recorder.*

Thompson TH. 1877. Map number six (Russian River, Santa Rosa, Analy Townships) in Historical atlas map of Sonoma County, California. Compiled, drawn and published from personal examinations and actual surveys. Oakland, CA: Thos H. Thompson & Co. *Courtesy of David Rumsey Map Collection.*

Tracy CC. 1859a. *Field notes of the obsolete survey of the Rancho Llano de Santa Rosa, Joaquin Carillo, confirmee.* Book G10. U.S. Department of the Interior, Bureau of Land Management. *Courtesy of Bureau of Land Management.*

Tracy CC. 1859b. Plat of the Llano de Santa Rosa, finally confirmed to Joaquin Carillo. Surveyed under instructions from the U.S. Surveyor General. Land Case Map E-131. *Courtesy of The Bancroft Library, UC Berkeley.*

Tukman GeoSpatial. 2016. *DRAFT Map of Sonoma County Vegetation GIS layer*(subset containing only the study area for this historical ecology study). [accessed June 2016]

USACE (U.S. Army Corps of Engineers). 1915. Sebastopol Quadrangle, California: 15-Minute Series (Topographic).

USDA (U.S. Department of Agriculture). 1942. [Aerial photos of Sonoma County] Flight COF-1942. U.S. Department of Agriculture, Soil Conservation Service.

USDC (U.S. District Court, Northern District). ca. 1840a. [Diseño del Rancho El Molino or Rio Ayoska : Sonoma Co., Calif.] Land Case Map B-492. *Courtesy of The Bancroft Library, UC Berkeley.*

USDC (U.S. District Court, Northern District). ca. 1840b. [Diseño del Rancho Llano de Santa Rosa : Calif.] Land Case Map B-128. *Courtesy of The Bancroft Library, UC Berkeley.*

USDC (U.S. District Court, Northern District). ca. 1840c. Mapa bel [sic] Rancho St. Miciel [sic], 3 leguas: [Sonoma County, Calif.] Land Case Map B-664. *Courtesy of The Bancroft Library, UC Berkeley.*

USGS (U.S. Geological Survey). [1933-5]1942. Sebastopol Quadrangle, California: 15-Minute series (Topographic).

U.S. Surveyor General's Office. 1866. Map of Township No. 7 North, Range No. 9 West (Mount Diablo Meridian). San Francisco, CA. *Courtesy of Bureau of Land Management.*

Watson EB, Dean WC, Zinn CJ, et al. 1915. Soil map, California. Healdsburg sheet. U.S. Department of Agriculture, Bureau of Soils. *Courtesy of Alabama Maps, University of Alabama.*

Watson EB, Dean WC, Zinn CJ, et al. 1917. *Soil survey of the Healdsburg area, California.* Advance sheets, field operations of the Bureau of Soils, 1915. Government Printing Office.

Whitacre TH. 1853. *Copy of field notes of survey of Township 6, 7, 8, 9, and 10 North of Ranges numbers 6, 7, 8, 9, and 10 West of Mount Diablo Meridian in the State of California.* Book 210-5. U.S. Department of the Interior, Bureau of Land Management. *Courtesy of Bureau of Land Management.*

WSI (Watershed Sciences, Inc.). 2013. [3-ft. LiDAR-derived bare earth digital elevation model (DEM) for Sonoma County.]. Sonoma County Vegetation Mapping and LiDAR Consortium. Data available at <http://sonomavegmap.org/>.

## Credits

San Francisco Estuary Institute 2017

## Use limitations

As with any map or GIS layer, confidence or certainty varies geographically due to differences in source data or methods. This geodatabase provides direct information about the certainty level of different areas and features to allow the user to intelligently assess the applicability of the data for the chosen technical question. The Interp Cert, Shape Cert, and Loc Cert fields provide information about the certainty of channel presence,

shape, and location, rated as high, medium, or low. For more detail about methods refer to: -- Grossinger, RM, Striplen CJ, Askevold R, Brewster E, Beller EE. 2007. Historical landscape ecology of an urbanized California valley: wetlands and woodlands in the Santa Clara Valley. *Landscape Ecology*.: 103-120. -- Technical users are strongly encouraged to read the forthcoming full study report (Baumgarten et al. 2016 – to be made available at <http://www.sfei.org>) to gain a stronger understanding of the strengths and limitations of the dataset. -- In no event shall the creators, custodians, or distributors of this information be liable for any damages arising out of its use (or the inability to use it). These data are not legal documents or of survey quality and are not intended to be used as such. Although extensive effort has been made to produce error-free and complete data, all geographic information has limitations due to the scale, resolution, date and interpretation of the original source materials. Users should consult available data documentation (metadata) for these particular data to determine limitations and the precision to which the data depict distance, direction, location or other geographic characteristics. Data may be subject to change without prior notification. If this data is modified, changes should be documented in a metadata record that should accompany all redistributed data. If data is transmitted or provided in any form to another user, the data must be accompanied by a copy of this disclaimer and all documentation provided with the original data set, including the full metadata record. SFEI requests that the use of these data in any map, publication, or report should cite the data source(s) used and give proper attribution and credit to the originators of the data.

#### Extent

**West** -122.844578 **East** -122.797576  
**North** 38.453166 **South** 38.389310

#### Scale Range

**Maximum (zoomed in)** 1:5,000  
**Minimum (zoomed out)** 1:150,000,000

#### ArcGIS Metadata ►

##### Topics and Keywords ►

\* CONTENT TYPE Downloadable Data

*Hide Topics and Keywords ▲*

##### Citation ►

\* TITLE Historical\_Habitats\_\_SFEI\_2017  
 PUBLICATION DATE 2014-06-04 00:00:00

PRESENTATION FORMATS \* digital map

*Hide Citation ▲*

##### Citation Contacts ►

###### RESPONSIBLE PARTY

INDIVIDUAL'S NAME Micha Salomon  
 ORGANIZATION'S NAME San Francisco Estuary Institute  
 CONTACT'S POSITION GIS Specialist  
 CONTACT'S ROLE originator

###### CONTACT INFORMATION ►

PHONE  
 VOICE 510-746-7353

###### ADDRESS

TYPE both  
 DELIVERY POINT 4911 Central Avenue  
 CITY Richmond  
 ADMINISTRATIVE AREA CA  
 POSTAL CODE 94804  
 COUNTRY US  
 E-MAIL ADDRESS [micha@sfei.org](mailto:micha@sfei.org)

## ONLINE RESOURCE

LOCATION [www.sfei.org](http://www.sfei.org)

FUNCTION PERFORMED download

[Hide Contact information ▲](#)[Hide Citation Contacts ▲](#)**Resource Details ►**

DATASET LANGUAGES \* English (UNITED STATES)

DATASET CHARACTER SET utf8 - 8 bit UCS Transfer Format

SPATIAL REPRESENTATION TYPE \* vector

\* PROCESSING ENVIRONMENT Version 6.2 (Build 9200) ; Esri ArcGIS 10.2.2.3552

## CREDITS

San Francisco Estuary Institute 2017

## ARCGIS ITEM PROPERTIES

\* NAME Historical\_Habitats\_\_SFEI\_2017

\* LOCATION file:///\\geodata1\\q\\Historical Ecology\\GIS\\Laguna de Santa Rosa\\Deliverable GIS data\\Laguna de Santa Rosa Delivered to Water Board FINAL 20170331\\Laguna\_de\_Santa\_Rosa\_Historical\_Ecology\_SFEI\_20170331.gdb

\* ACCESS PROTOCOL Local Area Network

[Hide Resource Details ▲](#)**Extents ►**

## EXTENT

## GEOGRAPHIC EXTENT

## BOUNDING RECTANGLE

EXTENT TYPE Extent used for searching

\* WEST LONGITUDE -122.844578

\* EAST LONGITUDE -122.797576

\* NORTH LATITUDE 38.453166

\* SOUTH LATITUDE 38.389310

EXTENT CONTAINS THE RESOURCE Yes

## EXTENT IN THE ITEM'S COORDINATE SYSTEM

\* WEST LONGITUDE -247918.650000

\* EAST LONGITUDE -244025.970100

\* SOUTH LATITUDE 45174.664000

\* NORTH LATITUDE 52160.261100

\* EXTENT CONTAINS THE RESOURCE Yes

[Hide Extents ▲](#)**Resource Constraints ►**

## CONSTRAINTS

## LIMITATIONS OF USE

As with any map or GIS layer, confidence or certainty varies geographically due to differences in source data or methods. This geodatabase provides direct information about the certainty level of different areas and features to allow the user to intelligently assess the applicability of the data for the chosen technical question. The Interp Cert, Shape Cert, and Loc Cert fields provide information about the certainty of channel presence, shape, and location, rated as high, medium, or low. For more detail about methods refer to: -- Grossinger, RM, Striplen CJ, Askeveld R, Brewster E, Beller EE. 2007. Historical landscape ecology of an urbanized California valley: wetlands and woodlands in the Santa Clara Valley. Landscape Ecology.: 103-120. -- Technical users are strongly encouraged to read the forthcoming full study report (Baumgarten et al. 2016 – to be made available at <http://www.sfei.org>) to gain a stronger understanding of the strengths and limitations of the dataset. -- In no event shall the creators, custodians, or

distributors of this information be liable for any damages arising out of its use (or the inability to use it). These data are not legal documents or of survey quality and are not intended to be used as such. Although extensive effort has been made to produce error-free and complete data, all geographic information has limitations due to the scale, resolution, date and interpretation of the original source materials. Users should consult available data documentation (metadata) for these particular data to determine limitations and the precision to which the data depict distance, direction, location or other geographic characteristics. Data may be subject to change without prior notification. If this data is modified, changes should be documented in a metadata record that should accompany all redistributed data. If data is transmitted or provided in any form to another user, the data must be accompanied by a copy of this disclaimer and all documentation provided with the original data set, including the full metadata record. SFEI requests that the use of these data in any map, publication, or report should cite the data source(s) used and give proper attribution and credit to the originators of the data.

[Hide Resource Constraints ▲](#)

## Spatial Reference ►

### ARCGIS COORDINATE SYSTEM

- \* TYPE Projected
- \* GEOGRAPHIC COORDINATE REFERENCE GCS\_North\_American\_1983
- \* PROJECTION NAD\_1983\_California\_Teale\_Albers
- \* COORDINATE REFERENCE DETAILS
  - PROJECTED COORDINATE SYSTEM
    - WELL-KNOWN IDENTIFIER 3310
    - X ORIGIN -16909700
    - Y ORIGIN -8597000
    - XY SCALE 10000
    - Z ORIGIN -100000
    - Z SCALE 10000
    - M ORIGIN -100000
    - M SCALE 10000
    - XY TOLERANCE 0.001
    - Z TOLERANCE 0.001
    - M TOLERANCE 0.001
    - HIGH PRECISION true
    - LATEST WELL-KNOWN IDENTIFIER 3310
    - WELL-KNOWN TEXT PROJCS["NAD\_1983\_California\_Teale\_Albers",GEOGCS["GCS\_North\_American\_1983",DATUM["D\_North\_American\_1983",SPHEROID["GRS\_1980",6378137.0,298.257222101]],PRIMEM["Greenwich",0.0],UNIT["Degree",0.0174532925199433]],PROJECTION["Albers"],PARAMETER["False\_Easting",0.0],PARAMETER["False\_Northing",-4000000.0],PARAMETER["Central\_Meridian",-120.0],PARAMETER["Standard\_Parallel\_1",34.0],PARAMETER["Standard\_Parallel\_2",40.5],PARAMETER["Latitude\_Of\_Origin",0.0],UNIT["Meter",1.0],AUTHORITY["EPSG",3310]]

### REFERENCE SYSTEM IDENTIFIER

- \* VALUE 3310
- \* CODESPACE EPSG
- \* VERSION 8.2.6

[Hide Spatial Reference ▲](#)

## Spatial Data Properties ►

### VECTOR ►

- \* LEVEL OF TOPOLOGY FOR THIS DATASET geometry only

### GEOMETRIC OBJECTS

- FEATURE CLASS NAME Historical\_Habitats\_\_SFEI\_2017
- \* OBJECT TYPE composite
- \* OBJECT COUNT 173

[Hide Vector ▲](#)

### ARCGIS FEATURE CLASS PROPERTIES ►

- FEATURE CLASS NAME Historical\_Habitats\_\_SFEI\_2017

- \* FEATURE TYPE Simple
- \* GEOMETRY TYPE Polygon
- \* HAS TOPOLOGY FALSE
- \* FEATURE COUNT 173
- \* SPATIAL INDEX TRUE
- \* LINEAR REFERENCING FALSE

[Hide ArcGIS Feature Class Properties ▲](#)

[Hide Spatial Data Properties ▲](#)

## Data Quality ►

SCOPE OF QUALITY INFORMATION ►  
 RESOURCE LEVEL dataset

[Hide Scope of quality information ▲](#)

[Hide Data Quality ▲](#)

## Geoprocessing history ►

### PROCESS

PROCESS NAME  
 DATE 2017-03-28 17:51:31  
 TOOL LOCATION c:\program files (x86)\arcgis\desktop10.2\ArcToolbox\Toolboxes\Data Management  
 Tools.tbx\CopyFeatures  
 COMMAND ISSUED  
 CopyFeatures "Q:\Historical Ecology\GIS\Laguna de Santa Rosa\GIS  
 Data\Laguna\_final\_topology\_test5\_20170331.gdb\topology\_testing\Historical\_Habitats\_\_SFEI\_2017"  
 "Q:\Historical Ecology\GIS\Laguna de Santa Rosa\Deliverable GIS data\Laguna de Santa Rosa  
 Delivered to Water Board FINAL 20170331  
 \Laguna\_de\_Santa\_Rosa\_Historical\_Ecology\_SFEI\_20170331.gdb\Historical\_Habitats\_\_SFEI\_2017" # 0  
 0 0  
 INCLUDE IN LINEAGE WHEN EXPORTING METADATA No

[Hide Geoprocessing history ▲](#)

## Distribution ►

DISTRIBUTION FORMAT  
 \* NAME File Geodatabase Feature Class

[Hide Distribution ▲](#)

## Fields ►

### DETAILS FOR OBJECT Historical\_Habitats\_\_SFEI\_2017 ►

\* TYPE Feature Class  
 \* ROW COUNT 173

### FIELD OBJECTID ►

\* ALIAS OBJECTID  
 \* DATA TYPE OID  
 \* WIDTH 4  
 \* PRECISION 0  
 \* SCALE 0  
 \* FIELD DESCRIPTION  
 Internal feature number.

\* DESCRIPTION SOURCE  
 Esri

\* DESCRIPTION OF VALUES  
 Sequential unique whole numbers that are automatically generated.



*Hide Field OBJECTID ▲*

FIELD Habitat\_Type ►

- \* ALIAS Habitat\_Type
- \* DATA TYPE String
- \* WIDTH 100
- \* PRECISION 0
- \* SCALE 0

*Hide Field Habitat\_Type ▲*

FIELD SHAPE ►

- \* ALIAS SHAPE
- \* DATA TYPE Geometry
- \* WIDTH 0
- \* PRECISION 0
- \* SCALE 0
- \* FIELD DESCRIPTION  
Feature geometry.
- \* DESCRIPTION SOURCE  
Esri
- \* DESCRIPTION OF VALUES  
Coordinates defining the features.

*Hide Field SHAPE ▲*

FIELD Interp\_Cert ►

- \* ALIAS Interp\_Cert
- \* DATA TYPE String
- \* WIDTH 3
- \* PRECISION 0
- \* SCALE 0

*Hide Field Interp\_Cert ▲*

FIELD Shape\_Cert ►

- \* ALIAS Shape\_Cert
- \* DATA TYPE String
- \* WIDTH 3
- \* PRECISION 0
- \* SCALE 0

*Hide Field Shape\_Cert ▲*

FIELD Loc\_Cert ►

- \* ALIAS Loc\_Cert
- \* DATA TYPE String
- \* WIDTH 3
- \* PRECISION 0
- \* SCALE 0

*Hide Field Loc\_Cert ▲*

FIELD Notes ►

- \* ALIAS Notes
- \* DATA TYPE String

- \* WIDTH 254
- \* PRECISION 0
- \* SCALE 0

*Hide Field Notes* ▲

FIELD S\_Digitize ►

- \* ALIAS S\_Digitize
- \* DATA TYPE String
- \* WIDTH 254
- \* PRECISION 0
- \* SCALE 0

*Hide Field S\_Digitize* ▲

FIELD S\_Interp1 ►

- \* ALIAS S\_Interp1
- \* DATA TYPE String
- \* WIDTH 254
- \* PRECISION 0
- \* SCALE 0

*Hide Field S\_Interp1* ▲

FIELD S\_Interp2 ►

- \* ALIAS S\_Interp2
- \* DATA TYPE String
- \* WIDTH 254
- \* PRECISION 0
- \* SCALE 0

*Hide Field S\_Interp2* ▲

FIELD Name ►

- \* ALIAS Name
- \* DATA TYPE String
- \* WIDTH 50
- \* PRECISION 0
- \* SCALE 0

*Hide Field Name* ▲

FIELD Source\_Quotes2 ►

- \* ALIAS Source\_Quotes2
- \* DATA TYPE String
- \* WIDTH 254
- \* PRECISION 0
- \* SCALE 0

*Hide Field Source\_Quotes2* ▲

FIELD Notes2 ►

- \* ALIAS Notes2
- \* DATA TYPE String
- \* WIDTH 254
- \* PRECISION 0
- \* SCALE 0

*Hide Field Notes2* ▲

FIELD Source\_Quotes ►

- \* ALIAS Source\_Quotes

\* DATA TYPE String  
 \* WIDTH 254  
 \* PRECISION 0  
 \* SCALE 0

[Hide Field Source\\_Quotes ▲](#)

#### FIELD SHAPE\_Length ►

\* ALIAS SHAPE\_Length  
 \* DATA TYPE Double  
 \* WIDTH 8  
 \* PRECISION 0  
 \* SCALE 0  
 \* FIELD DESCRIPTION  
 Length of feature in internal units.  
  
 \* DESCRIPTION SOURCE  
 Esri  
  
 \* DESCRIPTION OF VALUES  
 Positive real numbers that are automatically generated.

[Hide Field SHAPE\\_Length ▲](#)

#### FIELD SHAPE\_Area ►

\* ALIAS SHAPE\_Area  
 \* DATA TYPE Double  
 \* WIDTH 8  
 \* PRECISION 0  
 \* SCALE 0  
 \* FIELD DESCRIPTION  
 Area of feature in internal units squared.  
  
 \* DESCRIPTION SOURCE  
 Esri  
  
 \* DESCRIPTION OF VALUES  
 Positive real numbers that are automatically generated.

[Hide Field SHAPE\\_Area ▲](#)

[Hide Details for object Historical\\_Habitats\\_\\_SFEI\\_2017 ▲](#)

[Hide Fields ▲](#)

### Metadata Details ►

\* METADATA LANGUAGE English (UNITED STATES)  
 METADATA CHARACTER SET utf8 - 8 bit UCS Transfer Format

SCOPE OF THE DATA DESCRIBED BY THE METADATA \* dataset  
 SCOPE NAME \* dataset

\* LAST UPDATE 2017-03-28

#### ARCGIS METADATA PROPERTIES

METADATA FORMAT ArcGIS 1.0  
 METADATA STYLE FGDC CSDGM Metadata  
 STANDARD OR PROFILE USED TO EDIT METADATA FGDC

CREATED IN ARCGIS FOR THE ITEM 2017-03-28 18:17:12  
LAST MODIFIED IN ARCGIS FOR THE ITEM 2017-03-28 18:20:42

AUTOMATIC UPDATES

HAVE BEEN PERFORMED Yes  
LAST UPDATE 2017-03-28 18:20:42

[Hide Metadata Details ▲](#)

## Metadata Contacts ►

METADATA CONTACT

INDIVIDUAL'S NAME Micha Salomon  
ORGANIZATION'S NAME San Francisco Estuary Institute  
CONTACT'S POSITION GIS Specialist  
CONTACT'S ROLE originator

CONTACT INFORMATION ►

PHONE  
VOICE 510-746-7353

ADDRESS

TYPE both  
DELIVERY POINT 4911 Central Avenue  
CITY Richmond  
ADMINISTRATIVE AREA CA  
POSTAL CODE 94804  
COUNTRY US  
E-MAIL ADDRESS [micha@sfei.org](mailto:micha@sfei.org)

ONLINE RESOURCE

LOCATION [www.sfei.org](http://www.sfei.org)  
FUNCTION PERFORMED download

[Hide Contact information ▲](#)

[Hide Metadata Contacts ▲](#)

## Metadata Maintenance ►

MAINTENANCE

UPDATE FREQUENCY not planned

[Hide Metadata Maintenance ▲](#)

## Thumbnail and Enclosures ►

THUMBNAIL

THUMBNAIL TYPE JPG

[Hide Thumbnail and Enclosures ▲](#)

## FGDC Metadata (read-only) ▼